

SURVEYOR'S CERTIFICATE

P.S. Thomas, do hereby certify that during the month December, 1968, I did survey and subdivide part of the Northeast Quarter of Section 14, and part of the Southwest Quarter of the Southeast Quarter of Section 11, all in Township 44N, Range 12W, in the County of Cole, Missouri, and that said subdivision is correctly shown on this plat.

P.S. Thomas
Surveyor No. 847

OWNERS CERTIFICATE

We the undersigned, being the owners of the tract of land described in the foregoing Surveyor's Certificate, have caused said tract to be surveyed and subdivided into lots, streets and drives as shown on this plat, that on said plat the lot numbers and sizes thereof are truly set forth and that all streets and drives shown on said plat are hereby dedicated to the public for public use forever. All taxes due and payable against said property are paid in full. In witness whereof, the undersigned owners of said tract have hereunto set their hands and seals on this 27 day of December, 1968.

H. W. Major
Edna Major

STATE OF MISSOURI)
COUNTY OF COLE) S.S.

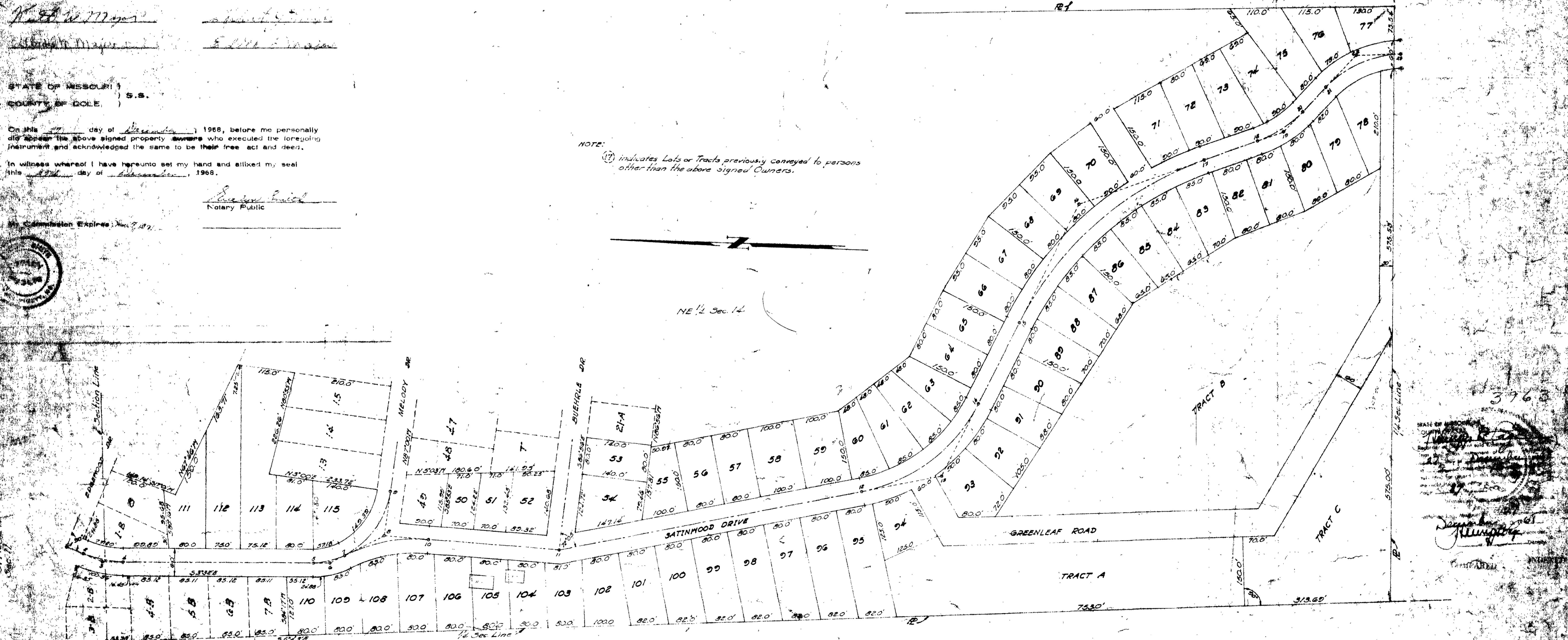
On this 27 day of December, 1968, before me personally did appear the above signed property owners who executed the foregoing instrument and acknowledged the same to be their free act and deed.

In witness whereof I have hereunto set my hand and affixed my seal this 27th day of December, 1968.

Richard Smith
Notary Public

My Commission Expires: Nov 2, 1971

NOTE: (1) indicates Lots or Tracts previously conveyed to persons other than the above signed Owners.



BUEHRLE SUBDIVISION-SECTION 2-

ALIGNMENT OF PROPOSED 32' STREET (SATINWOOD DRIVE)

1- P.C. 516.0139.07 R- P.T. 516.1104.02 A- 22°07'41" D- 24'55" T- 44.95' L- 89.78' R- 230.00' A- P.T. 516.1147.89	2- P.C. 516.3157.86 R- P.T. 516.3194.33 A- 27°26'41" D- 38'21" T- 36.47' L- 71.54' R- 149.42' A- P.T. 516.6129.40	3- P.C. 516.6129.40 R- P.T. 516.7126.03 A- 31°58'41" D- 17'02'46" T- 96.63' L- 187.53' R- 337.36' A- P.T. 516.8116.93	4- P.C. 516.8116.93 R- P.T. 516.9114.21 A- 15°29'30'41" D- 30'52" T- 96.63' L- 178.18' R- 185.62' A- P.T. 516.8107.58	5- P.C. 516.9114.21 R- P.T. 516.1014.21 A- 15°29'30'41" D- 30'52" T- 96.63' L- 178.18' R- 185.62' A- P.T. 516.8107.58	6- P.C. 516.1014.21 R- P.T. 516.1110.00 A- 15°29'30'41" D- 30'52" T- 96.63' L- 178.18' R- 185.62' A- P.T. 516.8107.58	7- P.C. 516.1110.00 R- P.T. 516.1176.28 A- 15°29'30'41" D- 30'52" T- 96.63' L- 178.18' R- 185.62' A- P.T. 516.8107.58	8- P.C. 516.1176.28 R- P.T. 516.1214.21 A- 15°29'30'41" D- 30'52" T- 96.63' L- 178.18' R- 185.62' A- P.T. 516.8107.58	9- P.C. 516.1214.21 R- P.T. 516.1281.63 A- 15°29'30'41" D- 30'52" T- 96.63' L- 178.18' R- 185.62' A- P.T. 516.8107.58	10- P.C. 516.1281.63 R- P.T. 516.1314.21 A- 15°29'30'41" D- 30'52" T- 96.63' L- 178.18' R- 185.62' A- P.T. 516.8107.58	11- P.C. 516.1314.21 R- P.T. 516.1381.63 A- 15°29'30'41" D- 30'52" T- 96.63' L- 178.18' R- 185.62' A- P.T. 516.8107.58	12- P.C. 516.1381.63 R- P.T. 516.1414.21 A- 15°29'30'41" D- 30'52" T- 96.63' L- 178.18' R- 185.62' A- P.T. 516.8107.58	13- P.C. 516.1414.21 R- P.T. 516.1481.63 A- 15°29'30'41" D- 30'52" T- 96.63' L- 178.18' R- 185.62' A- P.T. 516.8107.58	14- P.C. 516.1481.63 R- P.T. 516.1514.21 A- 15°29'30'41" D- 30'52" T- 96.63' L- 178.18' R- 185.62' A- P.T. 516.8107.58	15- P.C. 516.1514.21 R- P.T. 516.1581.63 A- 15°29'30'41" D- 30'52" T- 96.63' L- 178.18' R- 185.62' A- P.T. 516.8107.58	16- P.C. 516.1581.63 R- P.T. 516.1614.21 A- 15°29'30'41" D- 30'52" T- 96.63' L- 178.18' R- 185.62' A- P.T. 516.8107.58	17- P.C. 516.1614.21 R- P.T. 516.1681.63 A- 15°29'30'41" D- 30'52" T- 96.63' L- 178.18' R- 185.62' A- P.T. 516.8107.58	18- P.C. 516.1681.63 R- P.T. 516.1714.21 A- 15°29'30'41" D- 30'52" T- 96.63' L- 178.18' R- 185.62' A- P.T. 516.8107.58	19- P.C. 516.1714.21 R- P.T. 516.1781.63 A- 15°29'30'41" D- 30'52" T- 96.63' L- 178.18' R- 185.62' A- P.T. 516.8107.58	20- P.C. 516.1781.63 R- P.T. 516.1814.21 A- 15°29'30'41" D- 30'52" T- 96.63' L- 178.18' R- 185.62' A- P.T. 516.8107.58	21- P.C. 516.1814.21 R- P.T. 516.1881.63 A- 15°29'30'41" D- 30'52" T- 96.63' L- 178.18' R- 185.62' A- P.T. 516.8107.58	22- P.C. 516.1881.63 R- P.T. 516.1914.21 A- 15°29'30'41" D- 30'52" T- 96.63' L- 178.18' R- 185.62' A- P.T. 516.8107.58	23- P.C. 516.1914.21 R- P.T. 516.1981.63 A- 15°29'30'41" D- 30'52" T- 96.63' L- 178.18' R- 185.62' A- P.T. 516.8107.58	24- P.C. 516.1981.63 R- P.T. 516.2014.21 A- 15°29'30'41" D- 30'52" T- 96.63' L- 178.18' R- 185.62' A- P.T. 516.8107.58	25- P.C. 516.2014.21 R- P.T. 516.2081.63 A- 15°29'30'41" D- 30'52" T- 96.63' L- 178.18' R- 185.62' A- P.T. 516.8107.58
--	--	--	--	--	--	--	--	--	---	---	---	---	---	---	---	---	---	---	---	---	---	---	---	---

BUEHRLE SUBDIVISION SECTION 2
Part of Section 14, T.44N, R.12W

DATE: 12-68
APPROVED BY: SUP 103.01
DRAWING NUMBER: 20

SUB 103-II