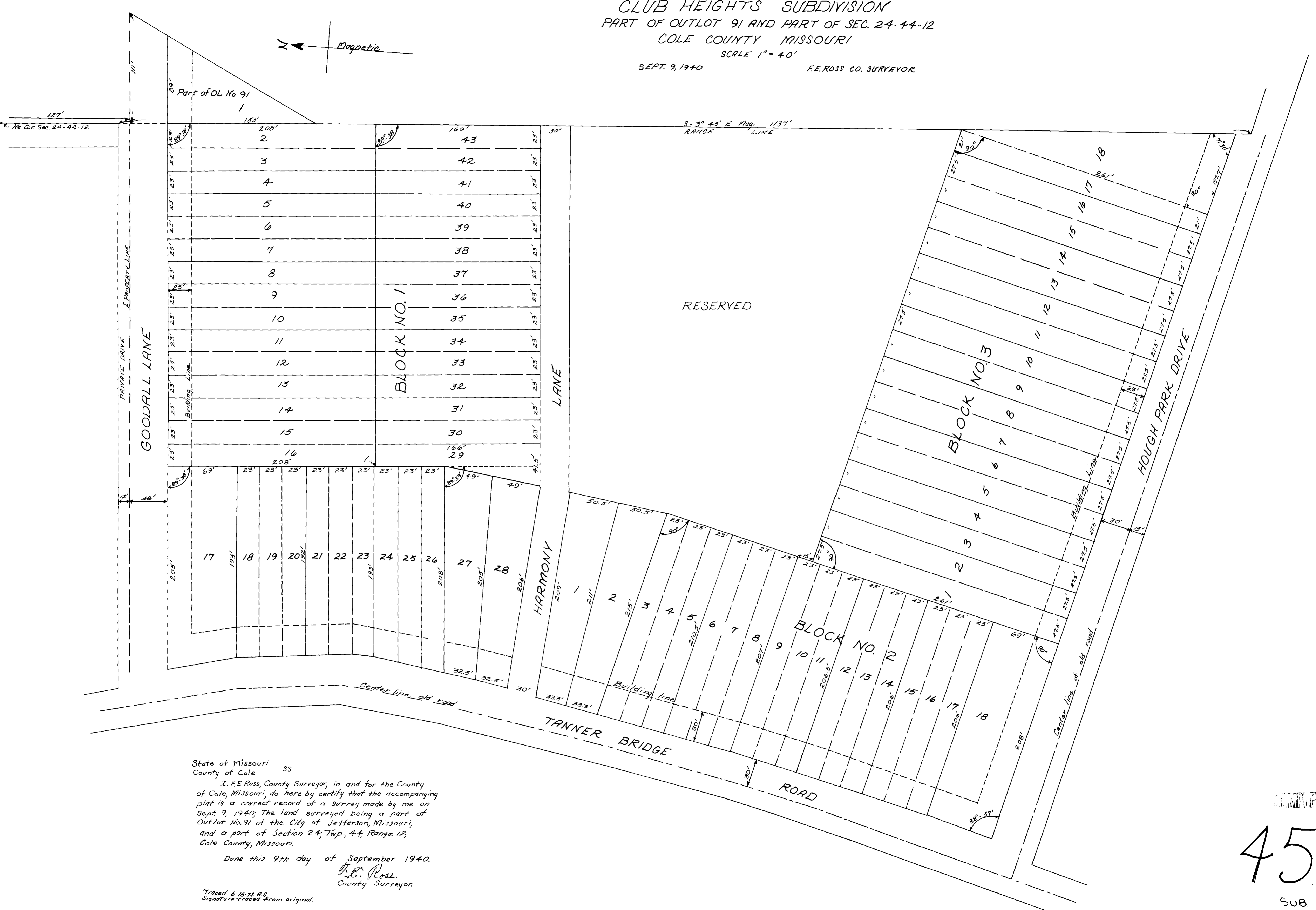
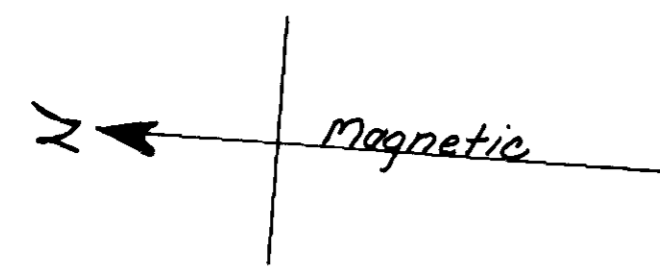


CLUB HEIGHTS SUBDIVISION
 PART OF OUTLOT 91 AND PART OF SEC. 24-44-12
 COLE COUNTY MISSOURI
 SCALE 1" = 40'
 SEPT. 9, 1940 F.E. ROSS CO. SURVEYOR



State of Missouri ss
 County of Cole

I, F.E. Ross, County Surveyor, in and for the County of Cole, Missouri, do hereby certify that the accompanying plat is a correct record of a survey made by me on Sept. 9, 1940; The land surveyed being a part of Outlot No. 91 of the City of Jefferson, Missouri, and a part of Section 24, Twp. 44, Range 12, Cole County, Missouri.

Done this 9th day of September 1940.

F.E. Ross
 County Surveyor.

Traced 6-16-72 R.S.
 Signature traced from original.

RECORDED

45

SUB. 45.00