

CORPORATE WOODS REPLAT

A REPLAT OF CORPORATE WOODS SUBDIVISION

AS PER PLAT OF RECORD IN PLAT BOOK 11, PAGE 779

COLE COUNTY RECORDER'S OFFICE

ZONED - P.U.D.

TOTAL AREA = 12.17 ACRES

DESCRIPTION
All of Corporate Woods Subdivision as recorded in Plat Book 11, page 779, Cole County Recorders Office, in the City of Jefferson, Missouri, more particularly described as follows:

Lots 1 thru 14 and all that part of Four Seasons Drive as vacated by the City of Jefferson in Ordinance No. 12692, and recorded in Book 393, Page 46, Cole County Recorder's Office.

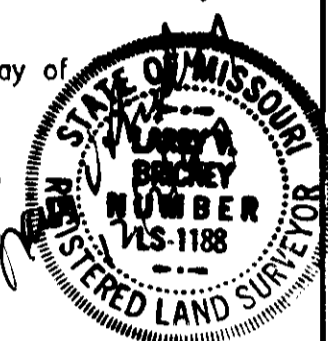
Containing in all 12.17 Acres.

SURVEYOR'S CERTIFICATE

This is to certify that at the request of CORPORATE WOODS PROPERTIES, INC., a survey and re-subdivision was made under my personal direction, regarding the property shown on this replat and that the results of said survey are represented correctly on said replat and that said survey was performed in accordance with the requirements of the standards for a Class C property boundary survey as adopted by the Missouri Board for Architects, Professional Engineers and Land Surveyors, (4 CSR 30-8.020.)

In Witness whereof I have hereunto set my seal and signature this 2nd day of December, 1998.

Larry V. Brickey
LARRY V. BRICKEY, Mo. R.L.S. #1188



OWNER'S CERTIFICATE

Know all men by these presents that we, the undersigned owner of the tract of land described in the foregoing Property Description, have caused said tract to be surveyed and re-subdivided into lots and on this replat the letters of the lots and the sizes hereof are fully and truly set forth, and the undersigned do hereby dedicate to the Public for Public use forever all Right-of-ways and Easements (not presently of record) as shown on this replat and said replat shall be known as CORPORATE WOODS SUBDIVISION.

All taxes due and payable against said property have been paid in full.

In Testimony whereof, CORPORATE WOODS PROPERTIES, INC., a Missouri Corporation, has caused these presents to be signed by its president and its seal to be affixed this 2nd day of December, 1998.

CORPORATE WOODS PROPERTIES, INC., a Missouri Corporation.

James Herfurth
James Herfurth, President
Matt Herfurth
Matt Herfurth, Secretary

I, the City Clerk of the City of Jefferson, County of Cole, State of Missouri, hereby certify that this plat was approved by the Mayor of the City of Jefferson, Missouri, by Ordinance No. 12702.

Approved this 6th day of JANUARY, 1998.

Duane Schreimmann
Duane Schreimmann, Mayor
Phyllis Powell
Phyllis Powell, City Clerk
Martin A. Brose
Martin A. Brose, P.E., Director of Public Works
Keith A. DeVault
Keith A. DeVault, Director of Planning and Code Enforcement

STATE OF MISSOURI }
COUNTY OF COLE } ss

On this 2nd day of December, 1998, before me personally did appear James Herfurth to me personally known, who, being by me duly sworn, did say that he is President of Herfurth Development, Inc., that the seal affixed to this instrument is the corporate seal of said corporation, and that the said instrument was signed and sealed in behalf of said corporation by authority of its Board of Directors.

And the said James Herfurth acknowledges said instrument to be the free act and

IN TESTIMONY WHEREOF, I have hereunto set my hand and affixed my official seal, at my office in *Camden, Mo* the day and year first above written.

Billie Amos
Notary Public Camden Co.
Billie Amos

My commission as Notary Public will expire on the 4th day of May, 2001.

Document No. 1540

STATE OF MISSOURI }
COUNTY OF COLE } ss
Filed for record 5 day of February, 1998
at 3 o'clock and 04 Minutes P.M.,
recorded in Book 12, Page 613.

LARRY D. RADEMAN, Recorder
Deputy Duane Fackelbauer, Deputy

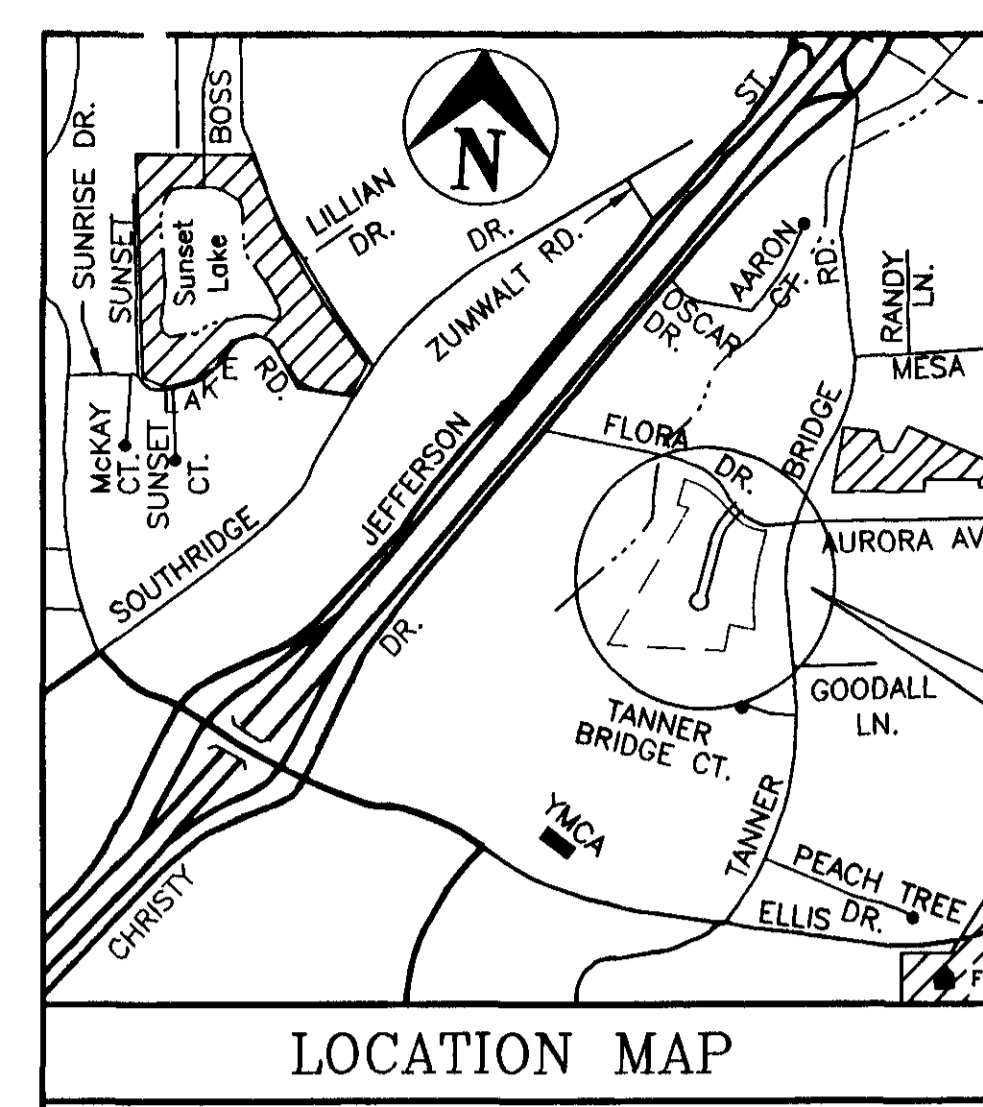
COMPLETED

Central Missouri Professional Services, Inc.
ENGINEERING - SURVEYING
2500 E. McCARTY
JEFFERSON CITY, MISSOURI 65101
Phone (314) 634-3455
FAX (314) 634-8898

TITLE: CORPORATE WOODS - REPLAT
SE 1/4, SEC. 13, T44N, R12W

FOR: CORPORATE WOODS PROPERTIES, INC.

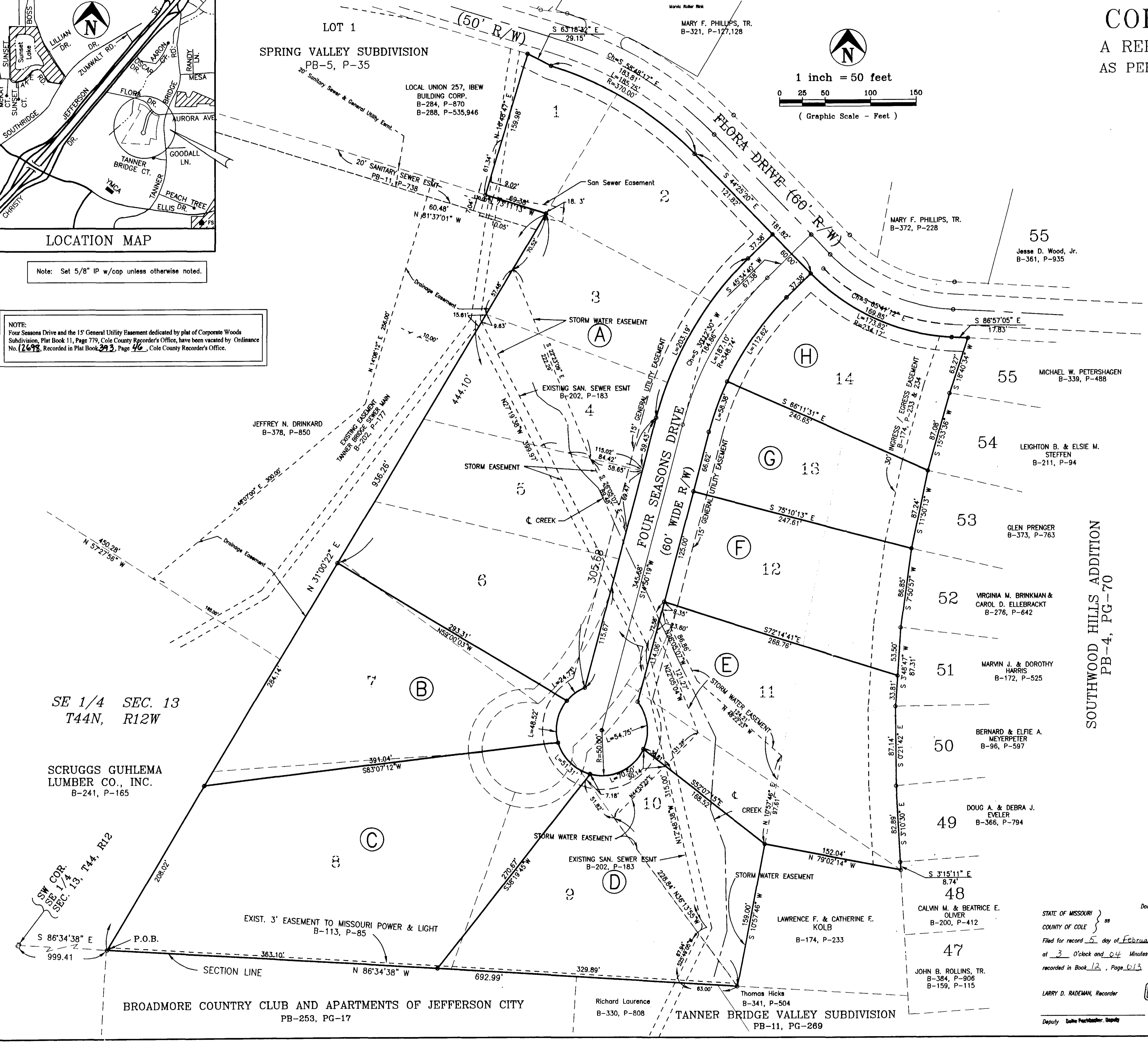
DATE: Oct. 16, 97	DRN. BY: BKM	SCALE: 1" = 50'	BOOK: 668
REV. DATE: Nov 12, 97	CKD. BY: L.V.B.	SHEET: 1 of 1	JOB NO. 84-296



LOCATION MAP

Note: Set 5/8" IP w/cap unless otherwise noted.

NOTE:
Four Seasons Drive and the 15' General Utility Easement dedicated by plat of Corporate Woods Subdivision, Plat Book 11, Page 779, Cole County Recorder's Office, have been vacated by Ordinance No. 12692, Recorded in Plat Book 393, Page 46, Cole County Recorder's Office.



SE 1/4 SEC. 13
T44N, R12W

SCRUGGS GUHLEMA
LUMBER CO., INC.
B-241, P-165

SOUTHWOOD HILLS ADDITION
PB-4, PG-70

BROADMORE COUNTRY CLUB AND APARTMENTS OF JEFFERSON CITY
PB-253, PG-17

TANNER BRIDGE VALLEY SUBDIVISION
PB-11, PG-269