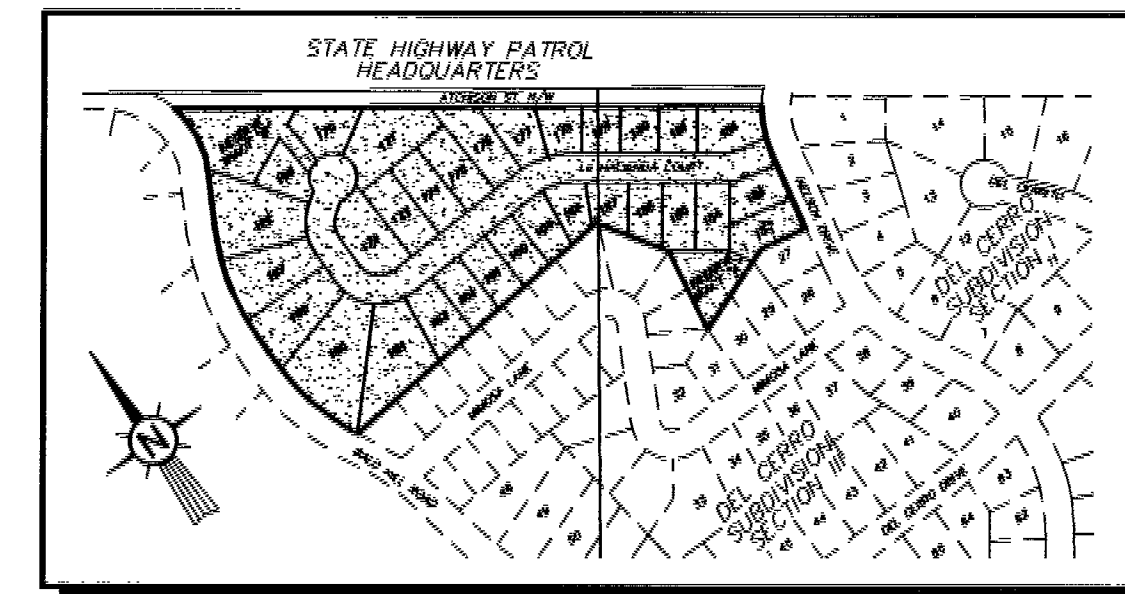


DEL CERRO SUBDIVISION

SECTION SEVEN
S. 1/2, SECTION 17, T44N, R11W
PART OF OUTLOTS 102 & 103,
CITY OF JEFFERSON
COLE COUNTY, MISSOURI
11.96 ACRES
ZONED RS-3

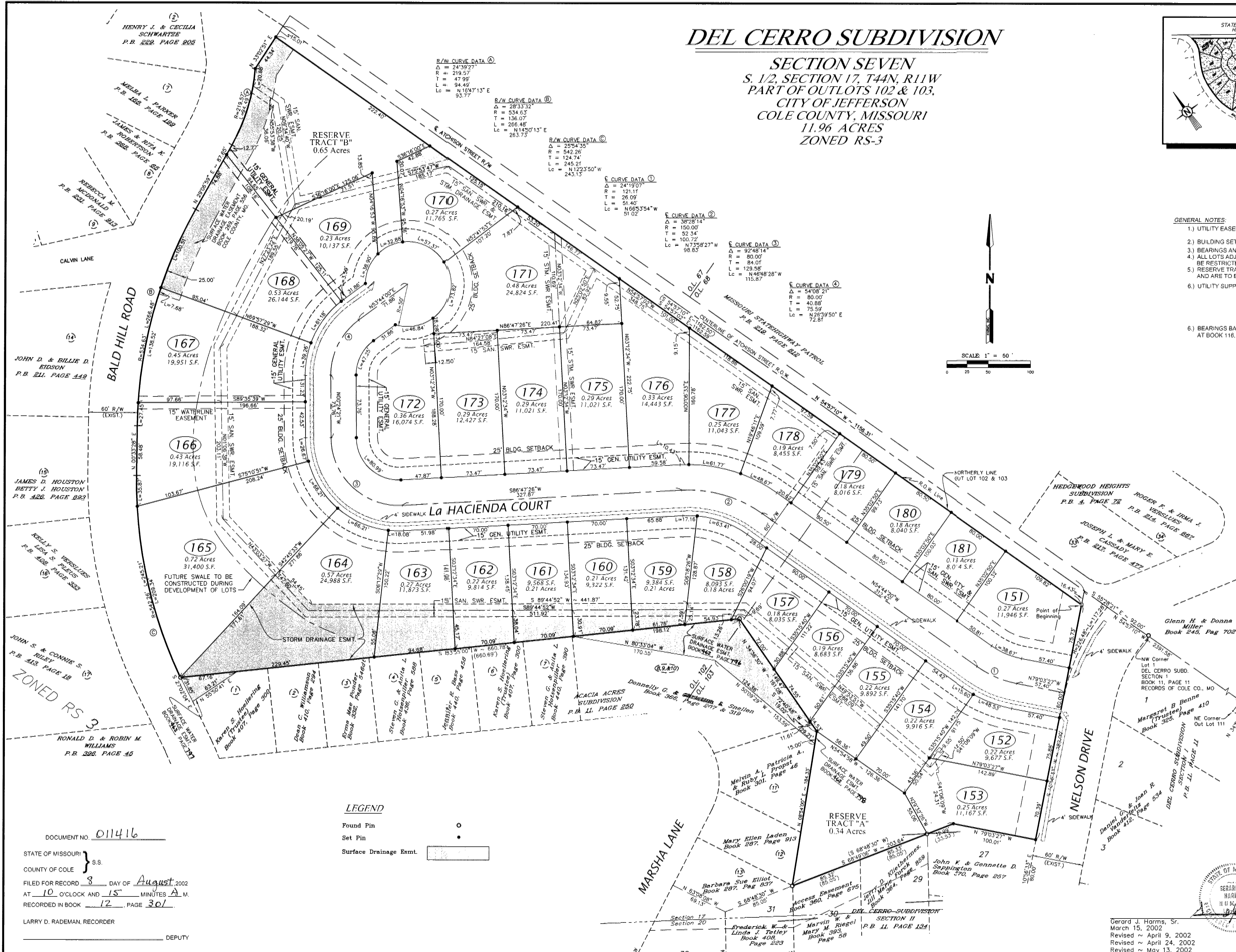


LOCATION MAP
N.T.S.

GENERAL NOTES:

- UTILITY EASEMENTS - 15 FT. WIDE ALONG THE FRONT LOTS LINES ADJOINING LA HACIENDA COURT RIGHT-OF-WAY.
- BUILDING SETBACK LINES - 25 FT. AT FRONT
- BEARINGS AND DISTANCES IN PARENTHESES () ARE RECORDED.
- ALL LOTS ADJOINING BALD HILL ROAD RIGHT-OF-WAY (165-169) WILL BE RESTRICTED FROM ACCESS TO BALD HILL ROAD.
- RESERVE TRACTS "A" & "B" ARE FOR STORM DETENTION PURPOSES AND ARE TO BE TRANSFERRED TO THE CITY OF JEFFERSON.
- UTILITY SUPPLIERS - ELECTRIC = AMEREN UE
TELEPHONE = SPRINT TEL
WATER = MO. AMERICAN WATER CO.
GAS = AMEREN UE
CABLE = MEDIALCOM
SAN. SEWER = CITY OF JEFFERSON
- BEARINGS BASED ON DEL CERRO PARENT TRACT RECORDED AT BOOK 116, PAGE 161 OF THE COLE COUNTY RECORDS.

SCALE 1" = 50'



LEGEND

- Found Pin
- Set Pin
- Surface Drainage Easmt.

DOCUMENT NO. 011416

STATE OF MISSOURI } S.S.
COUNTY OF COLE }
FILED FOR RECORD 8 DAY OF August, 2002
AT 10 O'CLOCK AND 15 MINUTES A.M.
RECORDED IN BOOK 12, PAGE 301

LARRY D. RADEMAN, RECORDER

DEL CERRO, LLC
CARL L. WEBER, Trustee
Dood Recorded in Book 410, Page 387
of the Records of Cole County, MO.

SW Consultants Inc.
Engineers and Consultants
2015 SCHOTTILL WOODS DRIVE
P.O. BOX 154
JEFFERSON CITY, MISSOURI 65102
PH: (873) 634-3551 / FX: (873) 634-3424

MISSOURI REGISTERED ARCHITECT
HARMS, INC.
LAND SURVEYORS
P.O. BOX 52
JEFFERSON CITY, MISSOURI 65102
(873) 634-8890

Gerard J. Harms, Sr.
March 15, 2002
Revised ~ April 9, 2002
Revised ~ April 24, 2002
Revised ~ May 13, 2002

PLS 1692
LC 000095

DATE	3/15/02	FB NO.	
SHEET	1 of 2	JOB NO.	01-4951-S
DRAWING NAME: Final Plat			