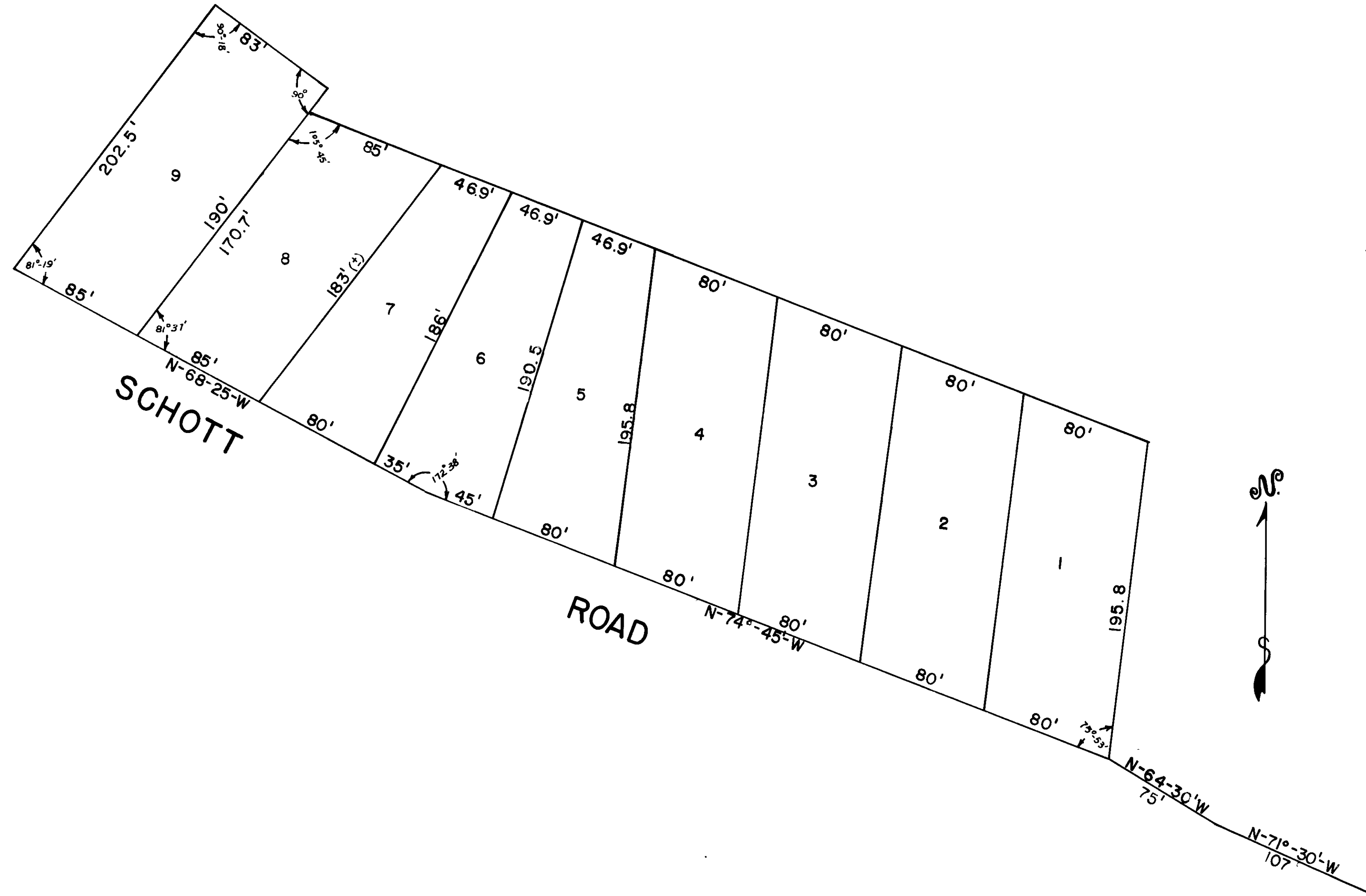


# ENGELBRECHT'S SUBDIVISION OF

PART N.E. 1/4 OF THE N.W. 1/4 SEC. 21-44-11

SCALE: 1" = 50'



1/4 SEC. COR. ON NORTH  
SIDE OF SEC. 21 TWP. 44-R 11

KNOW ALL MEN BY THESE PRESENTS, THAT CORNELIA ENGELBRECHT, IS THE OWNER OF A PART OF THE N.E. 1/4 OF THE N.W. 1/4 OF SECTION 21 TOWNSHIP 44 RANGE 11, IN THE CITY OF JEFFERSON MISSOURI, AND THAT THE SAID CORNELIA ENGELBRECHT, HAS MADE A SUBDIVISION OF THAT PART OF THE N.E. 1/4 OF THE N.W. 1/4 OF SAID SECTION, THAT ON THE ANNEXED PLAT, NUMBERS OF THE LOTS AND THE SIZE ARE FREELY SET FORTH.

IN WITNESS WHEREOF, THE SAID PARTY OF THE FIRST PART HAS SET HER HAND AND SEAL THIS 5TH DAY OF MAY, 1955.

*Cornelia Engelbrecht*

STATE OF MISSOURI ) SS  
COUNTY OF COLE )

ON THIS 5<sup>th</sup> DAY OF MAY, 1955, BEFORE ME PERSONALLY APPEARED CORNELIA ENGELBRECHT TO ME KNOWN TO BE THE PERSON DESCRIBED IN AND WHO EXECUTED THE FOREGOING INSTRUMENT AND ACKNOWLEDGED THAT SHE EXECUTED THE SAME AS HER FREE ACT AND DEED. AND THE SAID CORNELIA ENGELBRECHT FURTHER DECLARES HERSELF TO BE SINGLE AND UNMARRIED.

IN TESTIMONY WHEREOF, I HAVE HEREUNTO SET MY HAND AND AFFIXED MY OFFICIAL SEAL AT MY OFFICE IN JEFFERSON CITY, MISSOURI, THE DAY AND YEAR FIRST ABOVE WRITTEN.

MY COMMISSION EXPIRES Dec 10-1955

*W. H. Hildbough*  
NOTARY PUBLIC

STATE OF MISSOURI ) SS  
COUNTY OF COLE )

THIS IS TO CERTIFY THAT I, RICHARD D. FOWLER A SURVEYOR IN THE COUNTY AND STATE AFORESAID DID ON THIS 21 ST. DAY OF APRIL, 1955, SURVEY AND MADE A PLAT OF PART OF THE N.E. 1/4 OF THE N.W. 1/4 OF SECTION 21 TOWNSHIP 44 RANGE 12, IN THE CITY OF JEFFERSON, MISSOURI. THAT THIS PLAT SHOWS ALL LOTS IN THE SUBDIVISION BY NUMBERS THEIR PRECISE LENGTH AND WIDTH.

*Richard D. Fowler*  
SURVEYOR

93

SUB. 93.00

COMPLETED