

SURVEYORS CERTIFICATE

This is to certify that I, T.C. Norstmann, Registered Civil Engineer, have during the month of September 1946, by order of H.C. Waldman, executed a Survey and made a Sub-Division of a Portion of the South east 1/4 of the South West 1/4 and a part of the South West 1/4 of the South east 1/4 of Section 1, Township 44 North, Range 12 West of the Fifth Principal Meridian in the City of Jefferson, Cole County, Missouri, and that the results of this survey are correctly shown on this plat.

T.C. Norstmann
Civil Engineer

OWNERS CERTIFICATE

The Salmi-Rolugra Realty Co., a corporation organized and existing under and by virtue of the laws of the State of Missouri, being the owner of the rectangular tract of land shown on the attached plat and described as follows to-wit:-

Beginning at a point on the southerly line of McCarty Street, 30 feet west of the center of Hub Street; thence South 31° West (magnetic) 4 1/2 feet and 8 inches to the beginning point of this description; thence from said beginning point South 31° West, 303 feet and 4 inches; thence South 59° east 560 feet to a point that stands North 53° 05' East of the Quarter Section corner on the South Side of said Section 1; thence North 31° East 303 feet and 4 inches; thence North 59° West 560 feet to the point of beginning.

hereby certify that a survey has been made of said tract of land and the streets and avenues as shown on said plat have been laid out, namely the continuation, of Manila Street along a strip 28 feet wide along the easterly side of said tract; and the continuation of Hub Street along the westerly side of said tract, and that the same are hereby dedicated to the City of Jefferson, a municipal corporation, for public use forever.

And the undersigned does further certify that the Investors Syndicate, a Corporation, the owner and holder of the note and deed of trust on the above dedicated tract of land and the improvements thereon under date of August 12, 1944, did forever release and discharge from the lien of said deed of trust and note, the above described continuations of Hub and Manila Streets, as shown by plat of record in the office of the Recorder of Deeds, of Cole County, Missouri. Upon said streets being established, maintained and continued as a public roadway.

In Witness Whereof, said corporation has caused this Certificate to be signed by its President and attested by its Secretary, on this 22 day of October 1946.

Attest: *M. K. Kow* Secretary
SALMI-ROLUGRA REALTY CO.
By *H. C. Waldman* President
STATE OF MISSOURI } ss.
CITY OF ST. LOUIS }

Subscribed and sworn to before me this day of October, 1946.
My commission expires Oct. 12th 1948
SEAL
Notary Public

The undersigned owners of the tract of land asset out on this plat, hereby certify that a survey has been made of said tract and the lots, streets, avenues and easements laid out as shown on said plat; that on said plat the lot numbers of said lots and the size thereof are freely set forth, and that all streets, avenues and easements shown in and upon said plat, namely Avenues A, B, and C, and Manila Street, are hereby dedicated to the City of Jefferson a Municipal corporation, for public use forever.

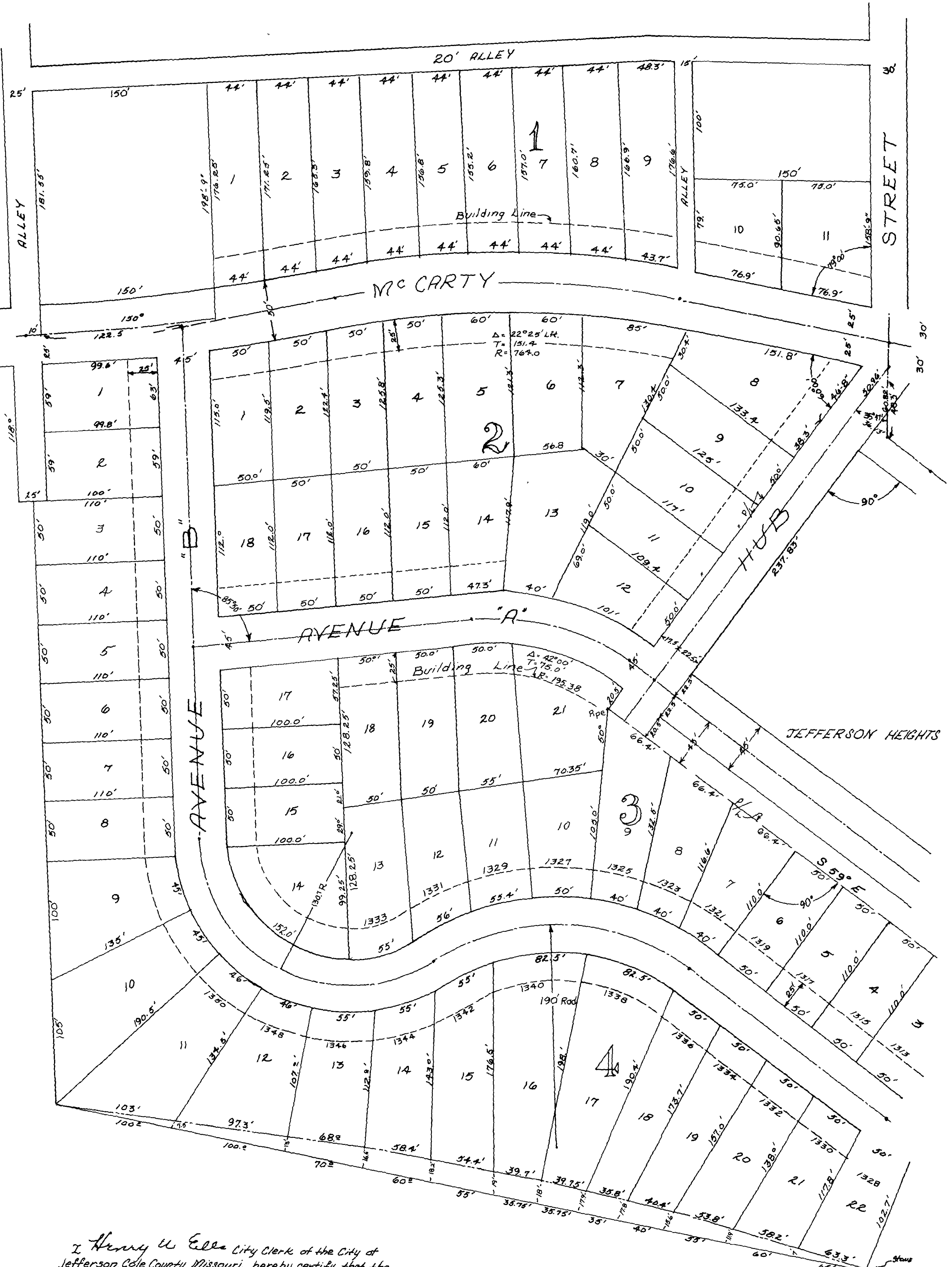
In Witness Whereof, the undersigned owners of said tract of land have hereunto set their hands and seals of the City of Jefferson, Missouri, on this 28 day of October 1946.

H. C. Waldman
H. C. Waldman

STATE OF MISSOURI } ss.
CITY OF ST. LOUIS }
Subscribed and sworn to before me a Notary Public within and for the County of Cole, on this 28th day of October 1946.

My commission expires Oct. 12th, 1948

Traced from print 6-27-1948. Signatures traced from originals.



I, Henry U. Eells, City Clerk of the City of Jefferson, Cole County, Missouri, hereby certify that the above plat was approved by the Mayor of the City of Jefferson, Missouri, by Ordinance No. 4842 approved the 15 day of October, A.D. 1946.
In witness whereof, I have hereunto set my hand and affixed the Seal of the City of Jefferson, Missouri, this 31st day of October, A.D. 1946.
Henry U. Eells
City Clerk

JEFFERSON HEIGHTS

IN THE SOUTH-EAST QUARTER OF THE SOUTH-WEST QUARTER AND A PART OF THE SOUTH-WEST QUARTER OF THE SOUTH-EAST QUARTER OF SECTION 1, TOWNSHIP 44 NORTH, RANGE 12 WEST IN JEFFERSON CITY, COLE COUNTY, MISSOURI

Scale 1" = 50'

67

67
(2 Sheets)