

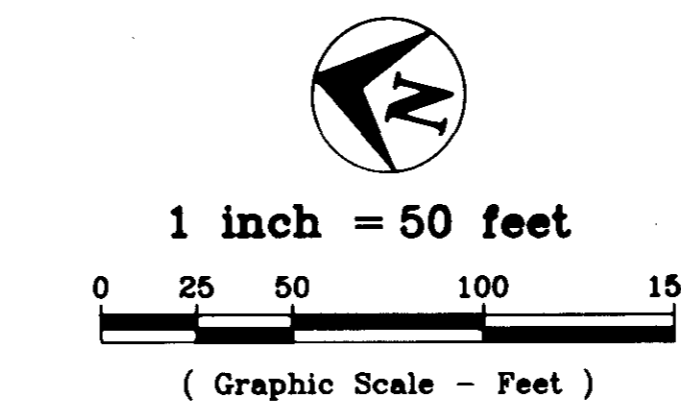
JENNA SUBDIVISION

PRESENT ZONING : C - 2

BOUNDARY - 5.59 ACRES

R.O.W. - .66 Acres

LOTS - 4.93 Acres

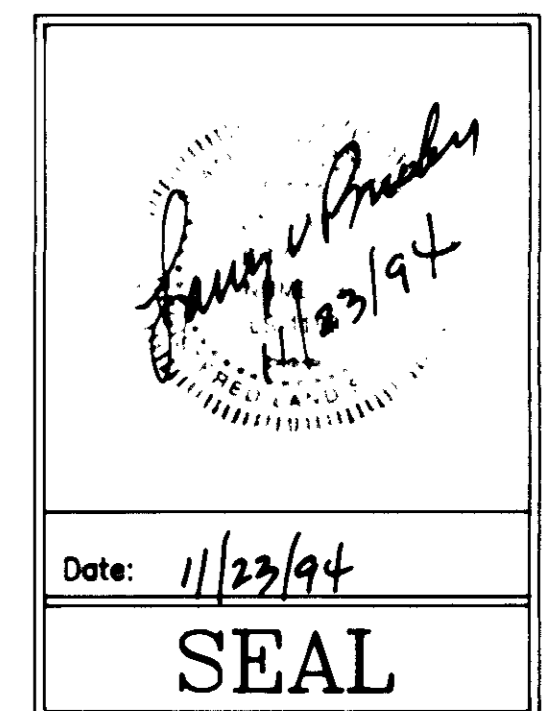


SW 1/4, NE 1/4
Sec. 24, T44N, R12W

NOTE: UNDERGROUND FACILITIES, STRUCTURES AND UTILITIES, HAVE BEEN PLOTTED FROM AVAILABLE SURVEYS AND RECORDS, AND THEREFORE THEIR LOCATIONS MUST BE CONSIDERED APPROXIMATE ONLY. THERE MAY BE OTHERS, THE EXISTENCE OF WHICH IS PRESENTLY NOT KNOWN.

MISSOURI STATE
HIGHWAY COMMISSION
BOOK 361, PAGE 800

SE 1/4, NW 1/4
Sec. 24, T44N, R12W



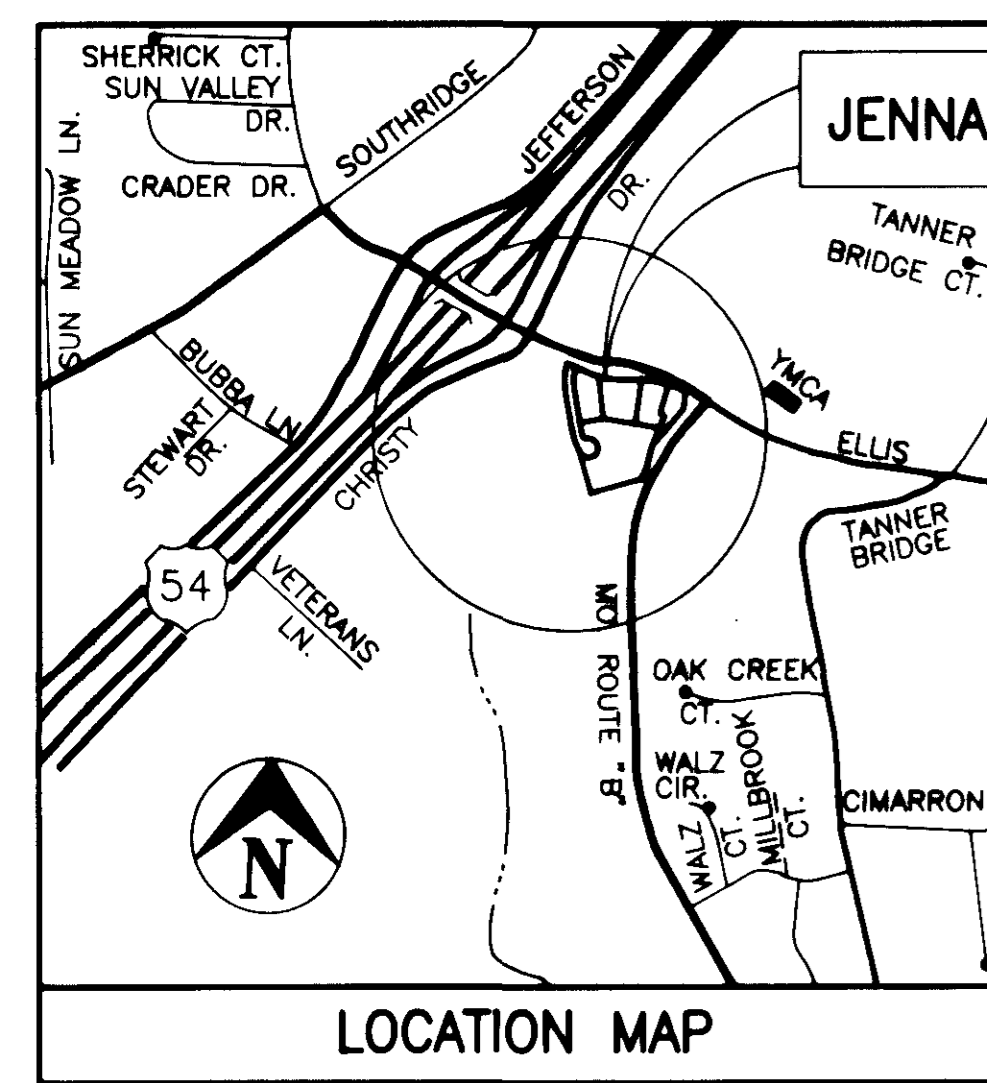
Date: 11/23/94

SEAL

- (I-1) BUILD 4' X 3' TYPE A INLET
D.A. - 0.68 AC QR25 - 3.4 C.F.S.
- (C-1) BUILD 145.0' OF 16 GA 15" CMP AT 3.46 %
QR25 - 0.68 AC CAP. FULL - 6.50 C.F.S.
- (I-2) BUILD 4' X 4' JUNCTION BOX
D.A. - 0.68 AC QR25 - 3.4 C.F.S.
- (C-2) BUILD 59.00' OF 16 GA 15" CMP AT 2.00 %
QR25 - 0.68 AC CAP. FULL - 5.00 C.F.S.

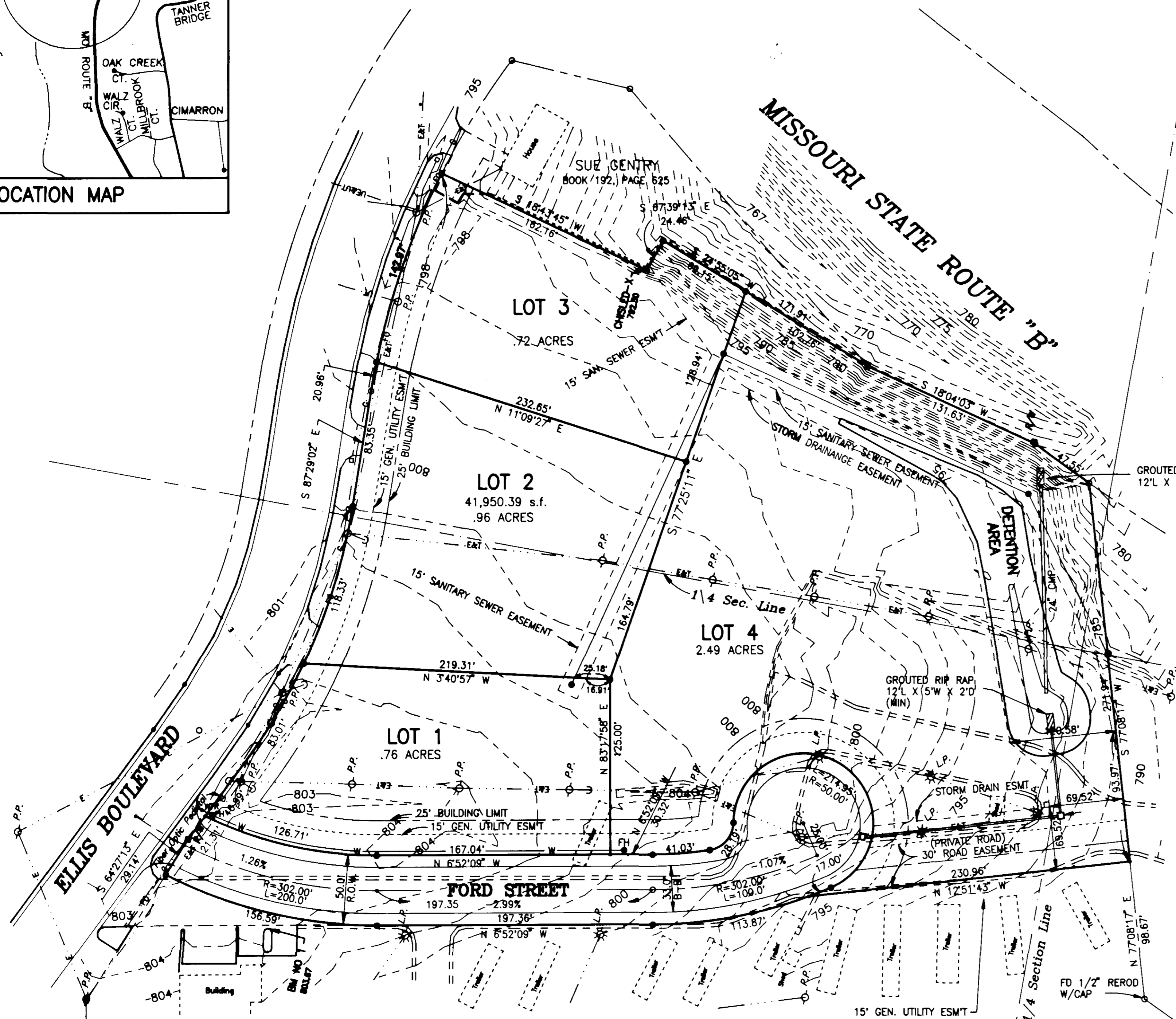
NE 1/4, NW 1/4
Sec. 24, T44N, R12W

R. SHELDON GENTRY



LOCATION MAP

NW 1/4, NE 1/4
Sec. 24, T44N, R12W



Central Missouri Professional Services, Inc. ENGINEERING - SURVEYING 2500 E. McCARTY JEFFERSON CITY, MISSOURI 65101 Phone (314) 634-3455 FAX (314) 634-8898			
TITLE PRELIMINARY - JENNA SUBDIVISION N 1/2, SEC. 24, T44N, R12W			
FOR LARRY KOLB & HAROLD McDOWELL			
DATE SEPT. 1994	DRN. BY K.M.B.	SCALE 1" = 50'	BOOK 648 (626)
REV.	CKD. BY	SHEET 1 OF 1	JOB NO. 85-382