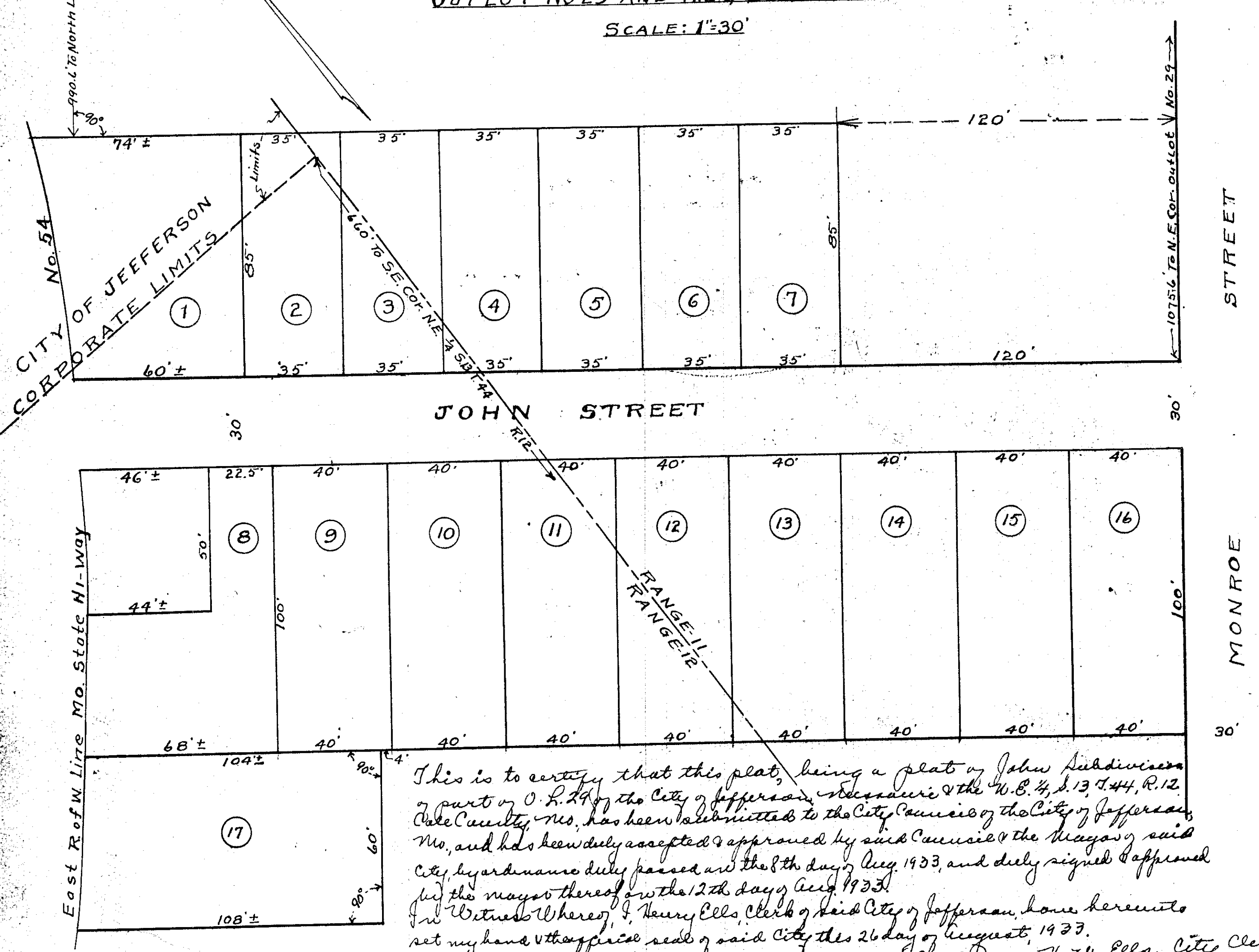


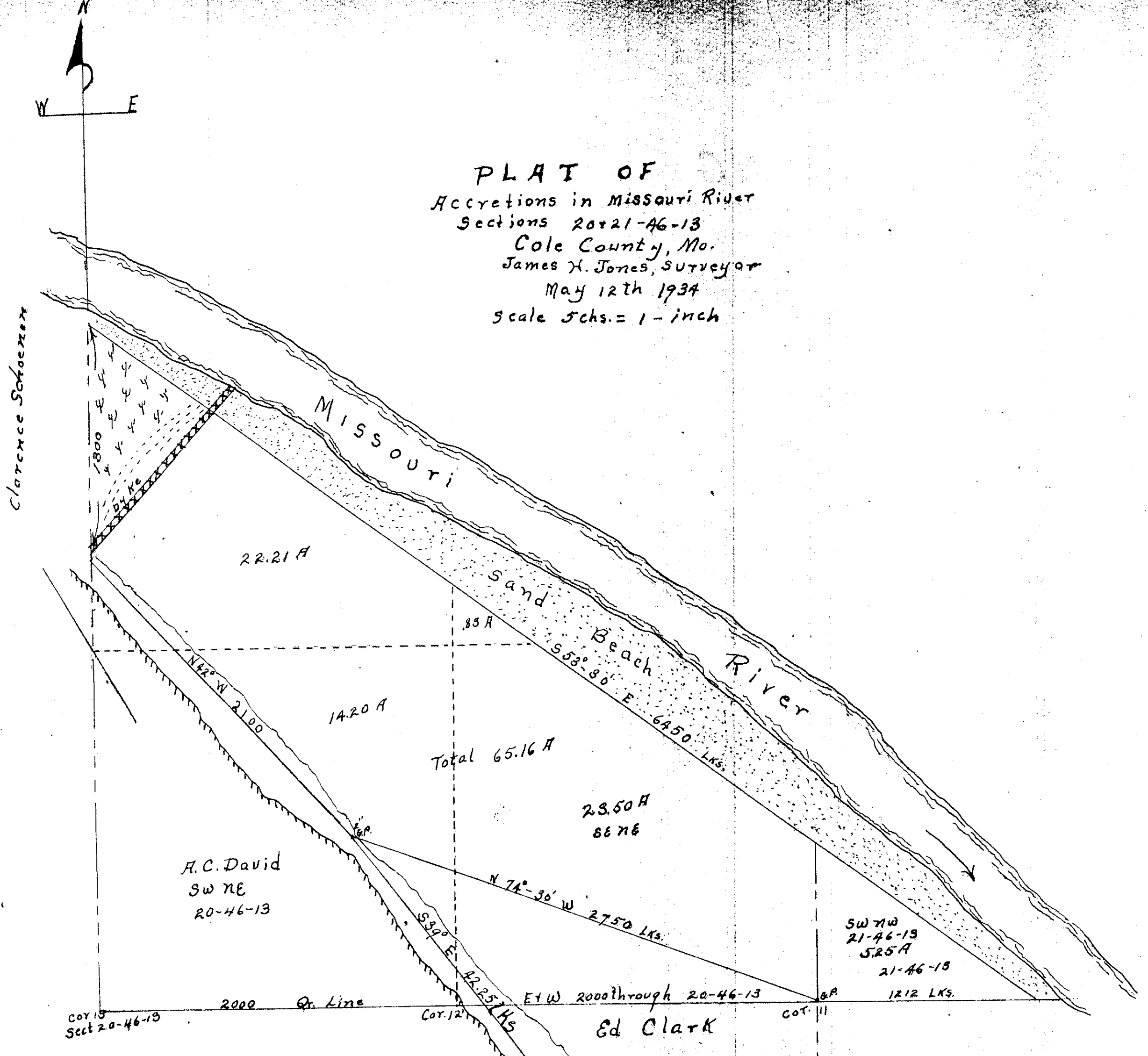
SUBDIVISION
OF A PART OF
OUTLOT NO 29 AND NE 1/4 SEC 13 T 44 R 12
SCALE: 1"=30'



This is to certify that this plat, being a plat of John Subdivision of part of O. L. 29 of the City of Jefferson, Missouri & the N.E. 1/4 Sec. 13, T. 44, R. 12, Cole County, Mo., has been submitted to the City Council of the City of Jefferson, Mo., and has been duly accepted & approved by said Council & the Mayor of said City, by ordinance duly passed on the 8th day of Aug. 1933, and duly signed & approved by the Mayor thereof on the 12th day of Aug. 1933.
In Witness Whereof, I, Henry Ellis, Clerk of said City of Jefferson, have hereunto set my hand & official seal of said City this 26 day of August, 1933.
(Seal) H. W. Ellis, City Clerk

Know all men by these Presents, that Ernest B. Nentwig and Cecelia C. Nentwig, his wife, and Leo H. Nentwig and Bertha Nentwig, his wife, being the owners of a Subdivision lying in part of Outlet Number Twenty nine (29) of the City of Jefferson, Missouri, and in the Northeast Quarter of Sections Thirteen (13), Township Forty four (44), Range Twelve (12), Cole County, Missouri, included in the boundaries shown on this plat, called "John Subdivision," a subdivision of land, do hereby certify that they have had a survey made and properly marked all lots, streets and right-of-ways, their boundaries, courses and extent, and do further certify that they have paid all taxes due and chargesable

against said property, and that on this plat, the number of lots and the sizes thereof are fully and truly set forth, and they do hereby dedicate to the public use all streets, drives and right-of-ways shown in and on said plat. In Witness Whereof, the said Ernest B. Nentwig and Cecelia C. Nentwig, his wife and Leo H. Nentwig and Bertha Nentwig, his wife, have hereunto set their hands and seals this 5th day of June, 1933.
Ernest B. Nentwig
Cecelia Nentwig
Leo H. Nentwig
Bertha Nentwig
Notary Public, Cole County, Missouri
my commission expires Oct. 5, 1933.
Filed for record August 28, 1933 at 2:30 P.M.
Henry G. Le Page, Recorder



State of Mo. County of Cole. I James H. Jones Co. Surveyor of Cole Co. Mo. do hereby certify that the above and foregoing Plat correctly locates an Island and accreted lands in Sections 20-21-46-13 of the 5th P.M. in the Old bed of the Missouri River, in the Municipal Twp. of Marion situated in Cole Co. Mo. Measured to low water. Same was surveyed by me under order of the County Court of Cole Co. Mo. Made on the 24th day of April 1934. Which appears of Record in Book "V" at page 307 of the County Court Records of Said County.
I hereby certify that I made said Survey by beginning at the Gr. Corner East side Section 20-46-13 at which point is a 2" Gas pipe set in ground. Thence N 74° 30' W Mag. 2750 lks. Thence N 42° W 2100 lks. (to a point 500 lks. North of the SW corner of the NW of the NE Section 20-46-13). Thence N 75° W Mag. 1800 lks. Thence S 53° 30' E 6450 lks. to a point 1212 lks. East of the beginning. Thence West 1212 lks. to the beginning.
This 12th day of May 1934
James H. Jones
Co. Surveyor
Cole Co. Mo.

Filed for record June 11, 1934 at 9:32 A.M.

Henry G. Le Page, Recorder
Rosalie D. Engelbrecht, Deputy