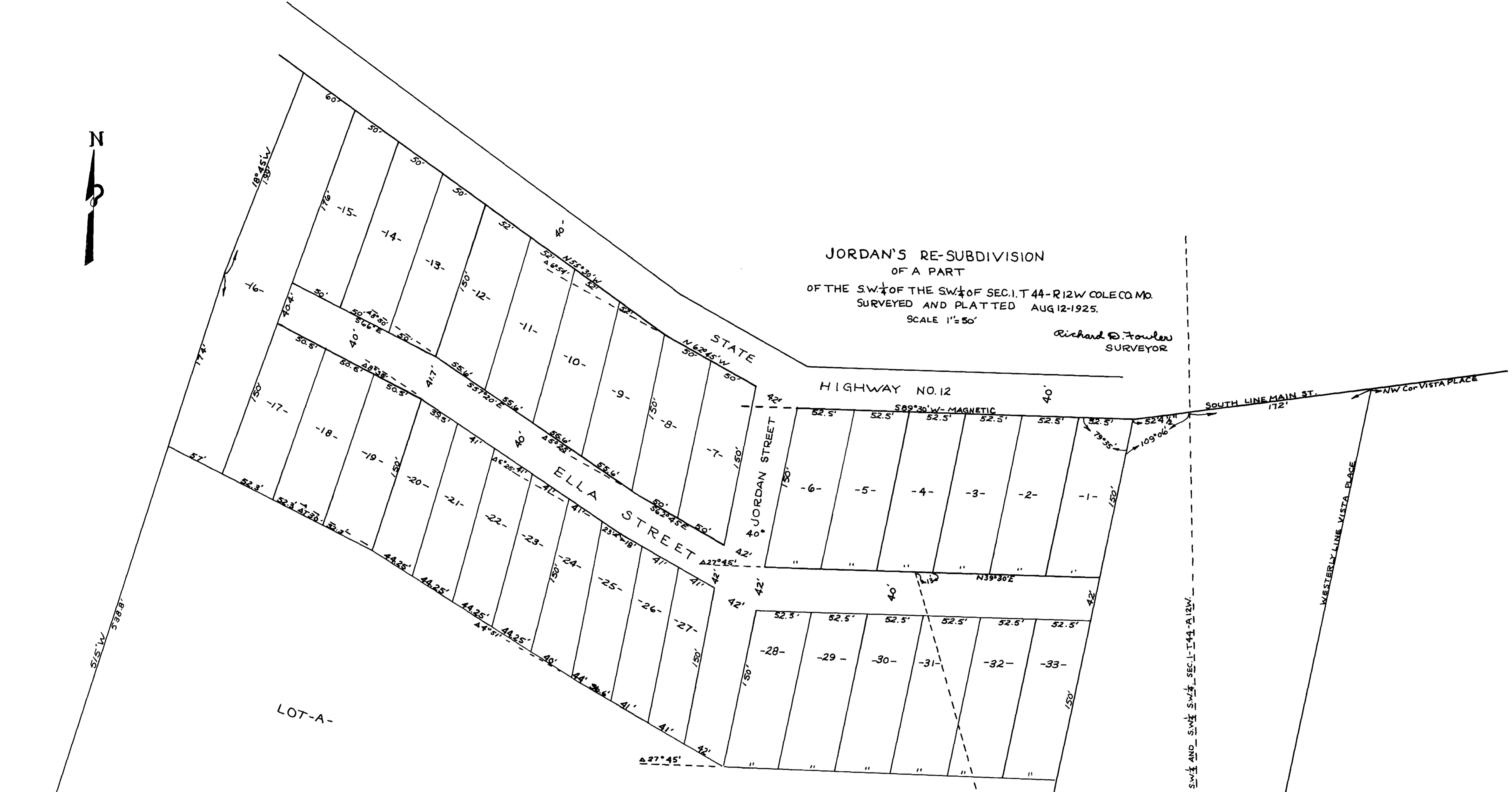




JORDAN'S RE-SUBDIVISION  
 OF A PART  
 OF THE S.W. 1/4 OF THE S.W. 1/4 OF SEC. 1, T. 44 - R. 12 W. COLE CO. MO.  
 SURVEYED AND PLATTED AUG 12 - 1925.  
 SCALE 1" = 50'

Richard D. Fowler  
 SURVEYOR



Lee Jordan and Ella Jordan, his wife, being the owners of the attached subdivision known as Jordan's Re-Subdivision of a part of the S.W. 1/4 of the S.W. 1/4 of Section 1, Township 44, Range 12, Cole County Missouri, do hereby certify they have had a survey made of and have properly marked all lots, streets, boundaries, and corners and courses, and that all tax against said property is paid; that all the lots and the size thereof are fully and truly set forth and they are hereby dedicated to public use all streets, alley and drives as shown on attached plat of Jordan's Re-Subdivision. In Witness Whereof, we hereunto set our hands and seals this 12th day of August, 1925.

Lee Jordan  
 Ella Jordan

Subscribed and known to before me this 12th day of August, 1925  
 My Commission Expires  
 September 8th, 1928.

Chas. A. Platt  
 Noting Public

(S 18° E 650' TO S.E. COR. S.W. 1/4 OF THE S.W. 1/4 - SEC. 1 - T. 44 - R. 12  
 S 18° E 450' TO S.W. COR. VISTA PLACE