

**SITE LOCATION MAP**

SE 1/4, NW 1/4,  
Sec. 9, T44N, R12W

SW 1/4, NE 1/4,  
Sec. 9, T44N, R12W

SW 1/4, SE 1/4,  
Sec. 9, T44N, R12W

SW 1/4, SW 1/4,  
Sec. 9, T44N, R12W

SW 1/4, NE 1/4,  
Sec. 9, T44N, R12W

SW 1/4, SE 1/4,  
Sec. 9, T44N, R12W

SW 1/4, SW 1/4,  
Sec. 9, T44N, R12W

SW 1/4, NE 1/4,  
Sec. 9, T44N, R12W

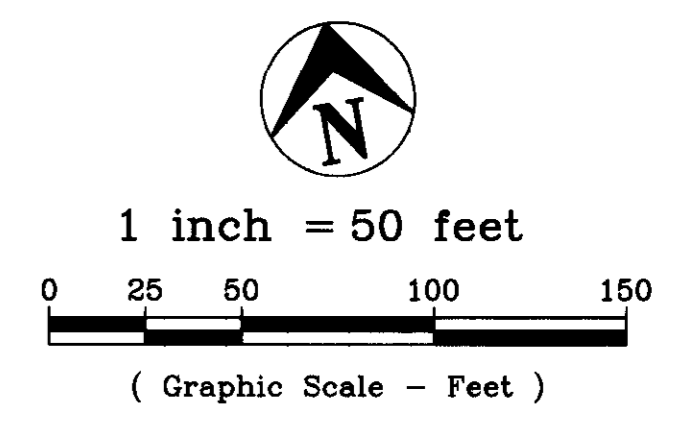
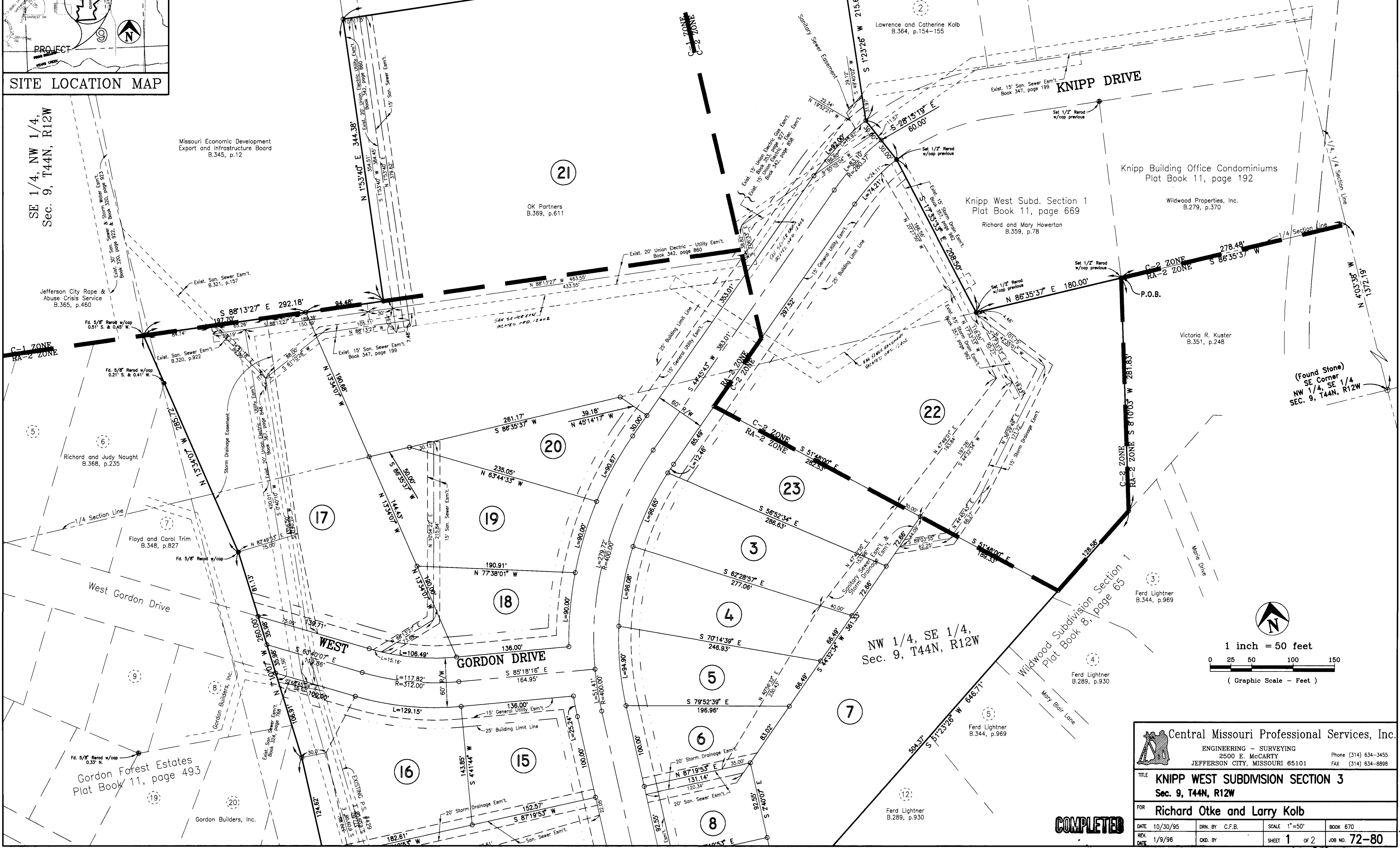
SW 1/4, SE 1/4,  
Sec. 9, T44N, R12W

Ollie Mae Knipp, Trustee  
B.314, p.683

SW 1/4, NE 1/4,  
Sec. 9, T44N, R12W

**KNIPP WEST SUBDIVISION SECTION 3**

TOTAL AREA = 35.20 Acres  
ZONED: RA-2, C-1, C-2 (SEE DRAWING)  
(Sheet 1 of 2)



<b>Central Missouri Professional Services, Inc.</b> ENGINEERING - SURVEYING 2500 E. McCARTY JEFFERSON CITY, MISSOURI 65101 Phone (314) 634-3455 FAX (314) 634-8898			
<b>TITLE</b> KNIPP WEST SUBDIVISION SECTION 3 Sec. 9, T44N, R12W			
<b>FOR</b> Richard Otke and Larry Kolb			
DATE	DRN. BY	SCALE	BOOK
10/30/95	C.F.B.	1"=50'	670
REV.	CHK. BY	SHEET	JOB NO.
1/9/96		1 OF 2	72-80

**COMPLETED**

379.00