

ALLISON V. & RUTH HORNER AND JOHN & MARY JANE HORNER

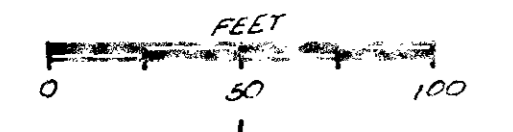
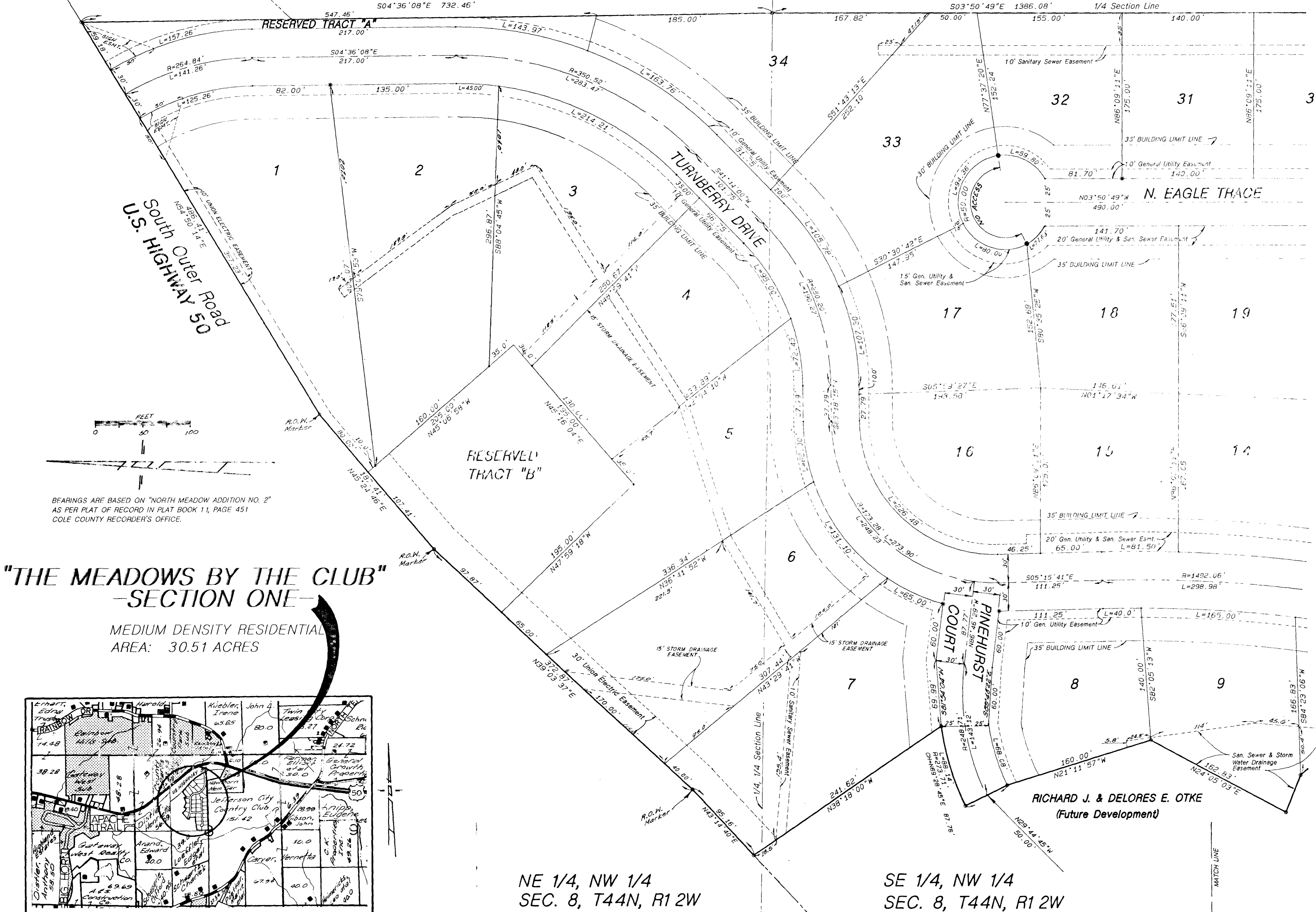
HAWTHORN MEMORIAL GARDENS, INC.

JEFFERSON CITY COUNTRY CLUB

NW 1/4, NE 1/4 SEC. 8, T44N, R1 2W

SW 1/4, NE 1/4 SEC. 8, T44N, R1 2W

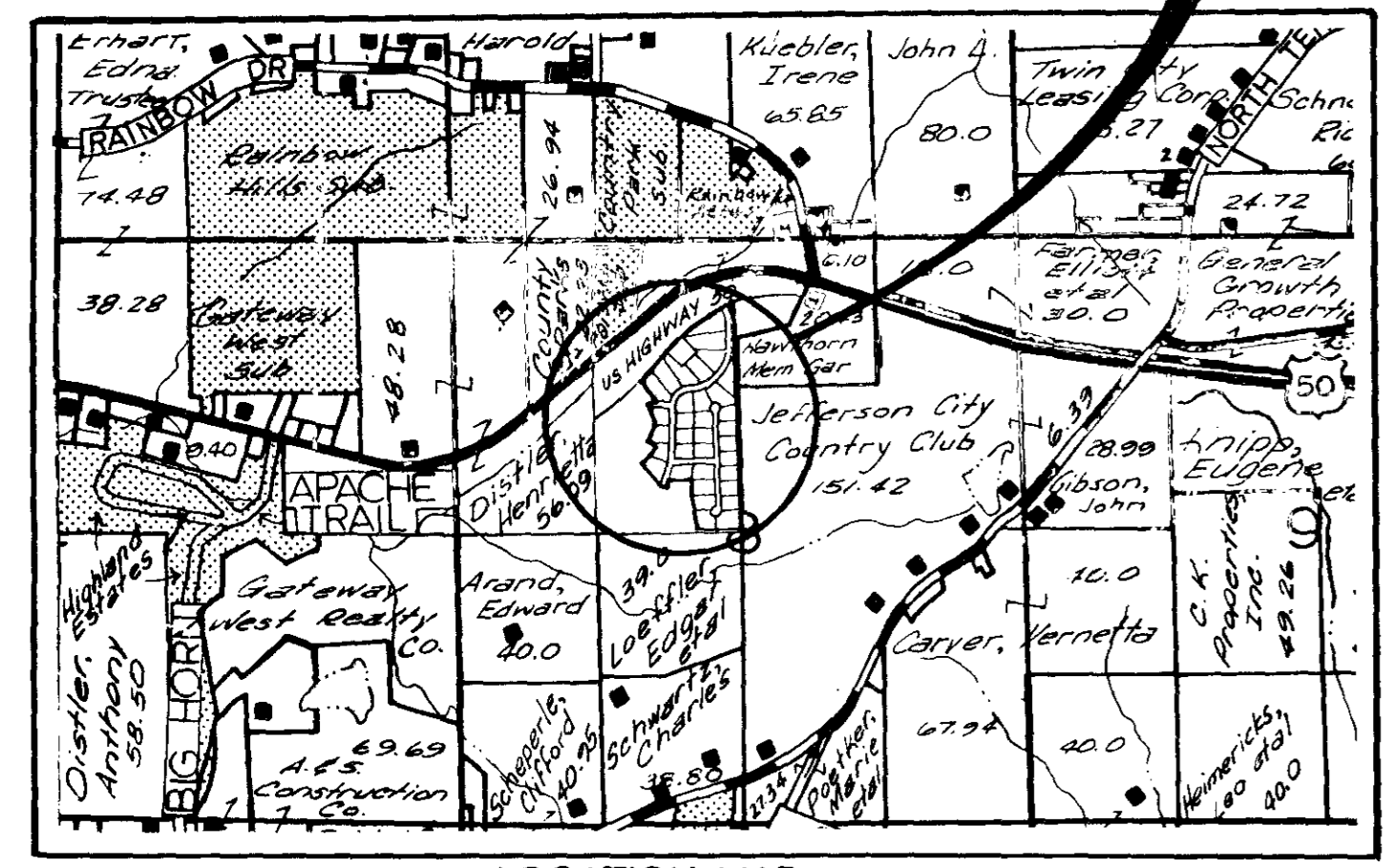
See Sheet 2 of 2



BEARINGS ARE BASED ON "NORTH MEADOW ADDITION NO. 2" AS PER PLAT OF RECORD IN PLAT BOOK 11, PAGE 451 COLE COUNTY RECORDER'S OFFICE.

"THE MEADOWS BY THE CLUB" - SECTION ONE

MEDIUM DENSITY RESIDENTIAL
AREA: 30.51 ACRES



BUILDING LIMIT LINES
35' FRONT } EXCEPT WHERE OTHERWISE NOTED
30' REAR }
15' SIDE }

NOTE: Set semi-permanent monument (1/2" Rod w/plastic cap) at all new and reestablished lot corners, except where otherwise noted.
* Indicates permanent monument (5/8" Rod w/metal cap)

NE 1/4, NW 1/4 SEC. 8, T44N, R1 2W

SE 1/4, NW 1/4 SEC. 8, T44N, R1 2W

CENTRAL MISSOURI PROFESSIONAL SERVICES, INC.
ENGINEERING AND SURVEYING
TEST DRILLING
2500 EAST MC CARTY
JEFFERSON CITY, MISSOURI 65101

TITLE THE MEADOWS BY THE CLUB - SECTION ONE			
FOR RICHARD J. & DELORES E. OTKE 4813 Shepherd Hills Rd., Jefferson City, Mo.			
DATE Feb., 1991	BOOK NO. 554	SCALE 1"=50'	DWN. BY DGS
REVISION DATE	CKD. BY LHV	SHEET 1 OF 2	JOB NO. 90-11