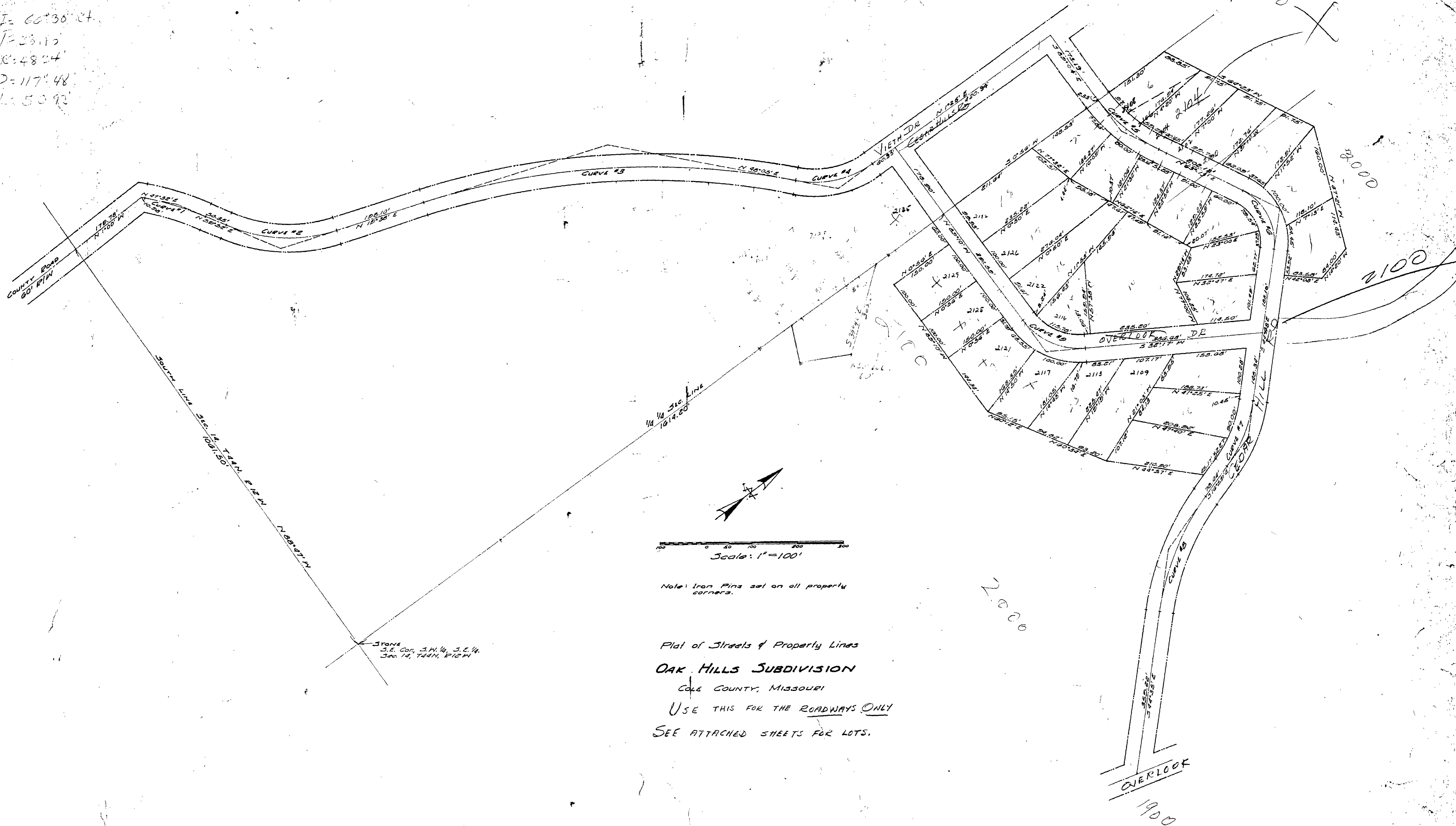


CURVE DATA

CURVE	#1	#2	#3	#4	#5	#6	#7	#8	#9
I	12°20' E	40°14' LI	33°27' E	46°43' LI	27°42' LI	72°00' E	27°52' E	27°36' LI	58°33' LI
T	68.00'	129.60'	420.00'	93.82'	88.62'	89.31'	80.00'	138.07'	84.89'
R	629.34'	353.83'	1656.74'	217.24'	359.44'	122.93'	322.44'	565.79'	151.38'
D	9°28'	16°14'	3°28'	26°36'	15°56'	46°37'	17°46'	10°08'	37°51'
L	135.95'	247.87'	819.88'	175.64'	173.78'	154.47'	156.84'	272.46'	154.69'

I = 60°30' RT
 T = 23.15
 R = 48.24
 D = 117°48'
 L = 50.92



Scale: 1" = 100'

Note: Iron Pins set on all property corners.

Plat of Streets & Property Lines
OAK HILLS SUBDIVISION
 COLE COUNTY, MISSOURI
 USE THIS FOR THE ROADWAYS ONLY
 SEE ATTACHED SHEETS FOR LOTS.

Stone
 S.E. Cor. 34. 1/4, 3.E. 1/4,
 34. 1/4, T44N, R12W

GRONER & PICKER
 CONSULTING ENGINEERS & LAND SURVEYORS
 JEFFERSON CITY, MO.

I hereby certify this plat to be a true copy of a survey made by me during Dec. 1964.

Richard S. Groner L.S. #122

COMPLETED 166 SUB 166.00

166