

DESCRIPTION

PART OF THE NE 1/4, SW 1/4 SEC. 16, T44N, R11W, MORE PARTICULARLY DESCRIBED AS FOLLOWS: BEGINNING AT A POINT WHERE THE 1/4 1/4 SEC. LINE INTERSECTS THE SOUTHERLY R/W LINE OF OLD U.S. HIGHWAY NO. 50 & 63; THENCE N 81°-30' E ALONG SAID R/W LINE 224.64'; THENCE S 5°-22' E, 196.0'; THENCE S 6°-42' E, 103.85'; THENCE S 5°-22' E, 60.0'; THENCE S 81°-30' W, 227.03' TO THE 1/4 1/4 SEC. LINE; THENCE N 5°-22' W ALONG THE 1/4 1/4 SEC. LINE 360.0' TO THE POINT OF BEGINNING, CONTAINING 1.9 ACRES MORE OR LESS.

SURVEYOR'S CERTIFICATE

I HEREBY CERTIFY THIS PLAT TO BE A TRUE AND EXACT RECORD OF A SURVEY MADE BY ME DURING THE MONTH OF NOV., 1964 OF THE ABOVE DESCRIBED PROPERTY.

DELMAR E. PICKER
DELMAR E. PICKER
LAND SURVEYOR NO. 844

OWNER'S CERTIFICATE

KNOW ALL MEN BY THESE PRESENTS THAT WE THE UNDERSIGNED BEING THE OWNERS OF THE TRACT OF LAND DESCRIBED IN THE FOREGOING SURVEYOR'S CERTIFICATE AND PLAT HEREBY CERTIFY THAT WE HAVE PAID ALL TAXES DUE AND PAYABLE AGAINST SAID PROPERTY. THAT ON THE ANNEXED PLAT THE NUMBERS OF THE LOTS AND THE SIZES THEREOF ARE FULLY AND TRULY SET FORTH AND WE DO HEREBY DEDICATE TO THE PUBLIC THE USE OF ALL STREETS, LANES, EASEMENTS, AND WALKS SHOWN IN AND ON SAID PLAT. IN WITNESS WHEREOF WE HAVE HEREUNTO SET OUR HANDS AND SEALS THIS 20TH DAY OF JULY 1965.

WAVERLY G. IRWIN
ERTIE M. IRWIN

STATE OF MISSOURI } s.s.
COUNTY OF COLE

SUBSCRIBED AND SWORN TO BEFORE ME THIS 20TH DAY OF JULY 1965.
MY COMMISSION EXPIRES JULY 31, 1966

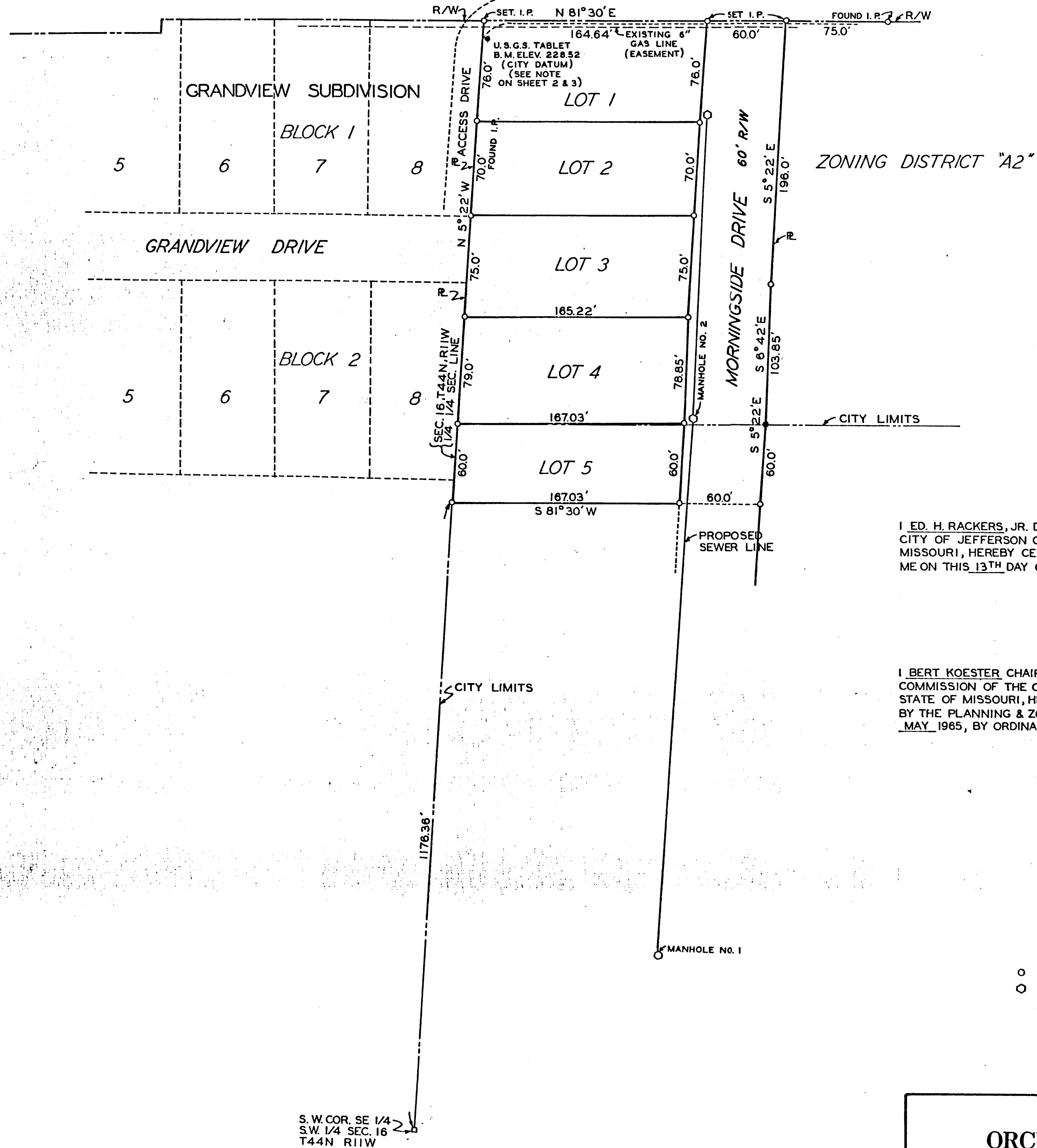
NELSON J. VINCENT
NOTARY PUBLIC, COLE COUNTY, MISSOURI

I, MARGARET CHRISTIAN, CLERK OF THE CITY OF JEFFERSON CITY, COUNTY OF COLE, STATE OF MISSOURI, HEREBY CERTIFY THIS PLAT WAS APPROVED BY THE MAYOR OF THE CITY OF JEFFERSON CITY, MISSOURI.
APPROVED THIS 13TH DAY OF JULY 1965, BY ORDINANCE NO. 7662

JOHN G. CHRISTY
MAYOR

MARGARET CHRISTIAN
CITY CLERK

(OLD) U.S. HIGHWAY NO. 50 & 63



I, ED. H. RACKERS, JR., DIRECTOR OF PUBLIC WORKS OF THE CITY OF JEFFERSON CITY, COUNTY OF COLE, STATE OF MISSOURI, HEREBY CERTIFY THIS PLAT WAS APPROVED BY ME ON THIS 13TH DAY OF JULY 1965, BY ORDINANCE NO. 7662.

ED. H. RACKERS, JR.
DIRECTOR OF PUBLIC WORKS

I, BERT KOESTER, CHAIRMAN, OF THE PLANNING & ZONING COMMISSION OF THE CITY OF JEFFERSON CITY, COUNTY OF COLE, STATE OF MISSOURI, HEREBY CERTIFY THIS PLAT WAS APPROVED BY THE PLANNING & ZONING COMMISSION ON THIS 13 DAY OF MAY 1965, BY ORDINANCE NO. 7662.

BERT KOESTER
CHAIRMAN, PLANNING & ZONING COMMISSION

LEGEND

- IRON PINS
- PROPOSED MANHOLES

**ORCHARD HEIGHTS
SUBDIVISION**

SCALE: 1" = 50'	GRONER & PICKER CONSULTING ENGINEERS AND LAND SURVEYORS 209 WEST MILLER STREET JEFFERSON CITY, MO.	DATE: 4/14/65 (REV)	
DRAWN BY D. E. P.		DRAWING	
DESIGNED BY	JEFFERSON CITY, MO.	SHEET NO.	TOTAL SHEETS
CHECKED BY		1	3
NO. 211			

SUBD 467.00

THIS PLAT IS TRULY COPIED FROM THE ORIGINAL.
FILED FOR RECORD JULY 28, 1965, AT 3:20 P.M.

Rhodes Diehl Krummen
DEPUTY

Henry L. Le Page
RECORDER

S.W. COR. SE 1/4
S.W. 1/4 SEC. 16
T44N R11W