

Know all men by these presents, that the Realty Holding Company, a corporation situated in the County of Cole, State of Missouri, is the owner of Lot 1 of Owen's Subdivision of Outlots 55 and 56 in the City of Jefferson, Missouri, do hereby certify that the Realty Holding Company has made a subdivision of said Lot 1, that on the annexed plat, numbers of the lots and the size are freely set forth.

IN WITNESS WHEREOF, The said party of the First Part has caused these presents to be signed by its President and its Corporate seal to be hereunto affixed.

REALTY HOLDING COMPANY
 William W. Smith, President
 Henry C. Easton, Secy.

STATE OF MISSOURI) S.S.
 COUNTY OF COLE)

This is to certify that I, Richard D. Fowler, a surveyor in the County and State aforesaid, did on this 22nd Day of Feb. 1945 Survey and made a plat of Lot 1 of Owen's Subdivision of Outlots 55 and 56 in the City of Jefferson, Mo. That this Plat Shows all Lots in the Subdivision of Lot 1 by numbers their precise Length and Width.

RICHARD D. FOWLER
 Surveyor

SCALE 1"=20'

STATE OF MISSOURI) S.S.
 COUNTY OF COLE)

On this 9th day of March A.D. 1945, before me personally appeared William W. Smith, who being by me duly sworn, did say that he is President of the Realty Holding Company, that the seal affixed to this instrument is the corporate Seal of said Corporation, and that the said instrument was signed and sealed in behalf of said corporation by authority of its Board of Directors, and that the said William W. Smith acknowledges said instrument to be the free act and deed of said Corporation.

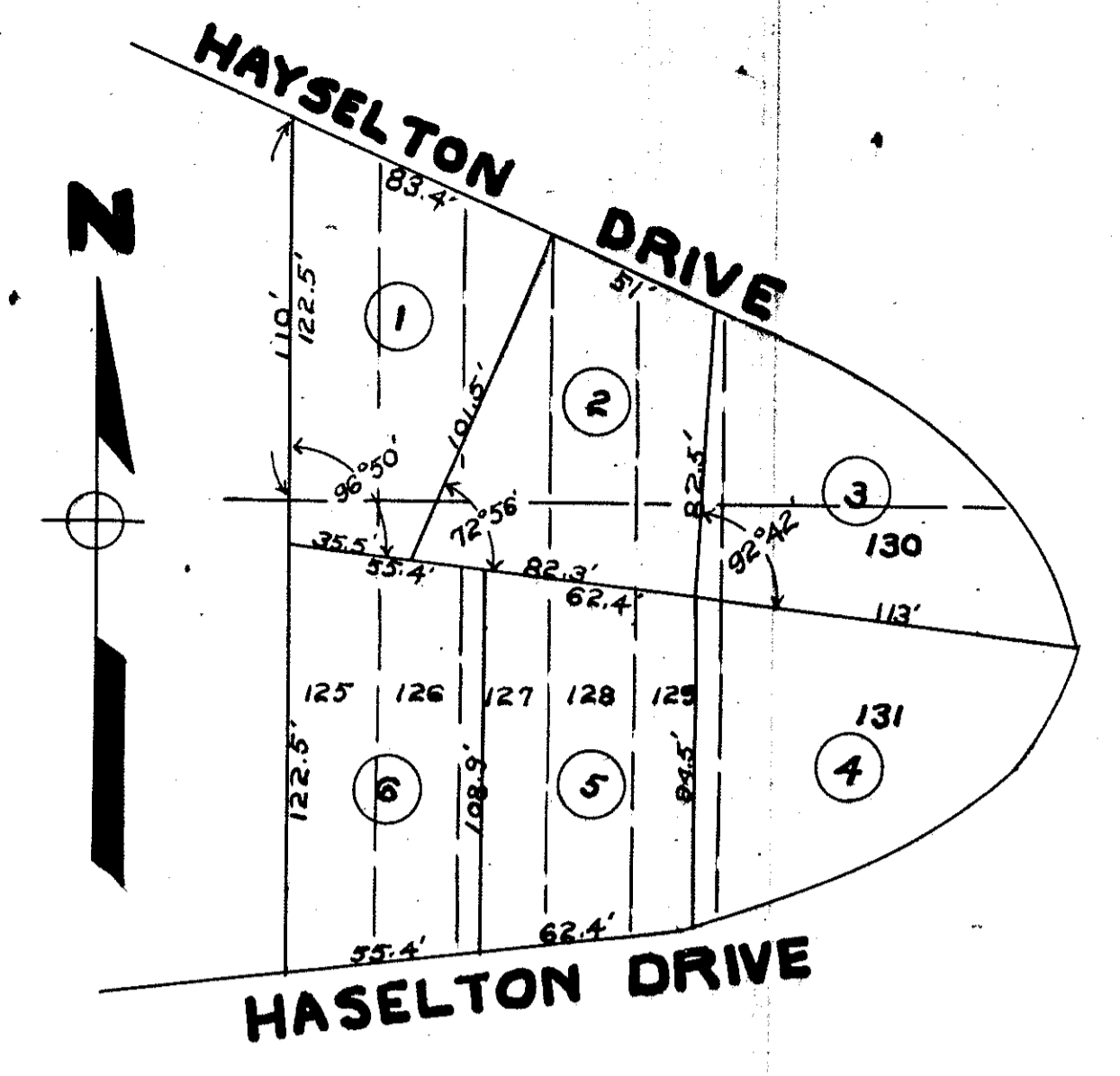
IN TESTIMONY WHEREOF, I have hereunto set my hand affixed my official seal at my office in Jefferson City, Missouri, the day and year first above written.

LON V. CROSS
 Notary Public

My commission expires June 10th 1945

Filed for Record March 13, 1945 at 10:30 A.M.

Henry G. LePage
 Recorder



PAUL STEPELMAN'S SUBDIVISION

BEING A SUBDIVISION OF LOTS 125 TO 131 INCLUSIVE, BLOCK 4 SUNSET PLACE ADDITION, A SUBDIVISION OF PART OF SECTION 1, TOWNSHIP 44 RANGE 12 WEST, AND ALSO PART OF SECTIONS 35 AND 36 TOWNSHIP 45 RANGE 12 WEST, IN THE CITY OF JEFFERSON, MISSOURI.

STATE OF MISSOURI) S.S.
 COUNTY OF COLE)

THIS IS TO CERTIFY THAT I, RICHARD D. FOWLER, A SURVEYOR IN THE COUNTY AND STATE AFORESAID DID ON THIS 27th DAY OF SEPTEMBER, 1940, SURVEY AND MADE A PLAT OF STEPELMAN'S SUBDIVISION AND THAT THIS PLAT SHOWS ALL LOTS BY NUMBERS, THEIR PRECISE LENGTH AND WIDTH.

RICHARD D. FOWLER
 Surveyor

FILED FOR RECORD OCT 2, 1940 AT 1:30 PM

Henry G. LePage