

Curve Data		Remarks	
Winston St.	Winston-Chesnut	Point	Station
PC	6+32.12	12+31.12	A 0+00
PT	10+34.44	17+23.22	B 5+46.22
Δ	40°06'	49°11'	C 6+32.12
D	10°00'	10°00'	D 10+34.44
T	209.37	262.55	E 12+31.12
L	401.51 arc	492.46 arc	F 17+23.22
R	573.69	573.69	Bearings on curves are chords.
			Distances on curves are arcs.

Edwin Goldammer and Alma C. Goldammer, his wife, Tommy Goldammer and Rose Mary Goldammer, his wife, being the owners of the subdivision, plotted hereon, known as ROSEWOOD ADDITION, being a part of Outlot 99 at Sections 18 & 19, Township 44 North, Range 11 West, Cole County, Missouri, do hereby certify that they have had a survey made of and have properly marked all lots, streets, boundaries and corners and courses, and that all tax against said property is paid; that all the lots and the size thereof are fully and truly set forth and there are hereby dedicated to public use all streets and drives as shown on this plat.

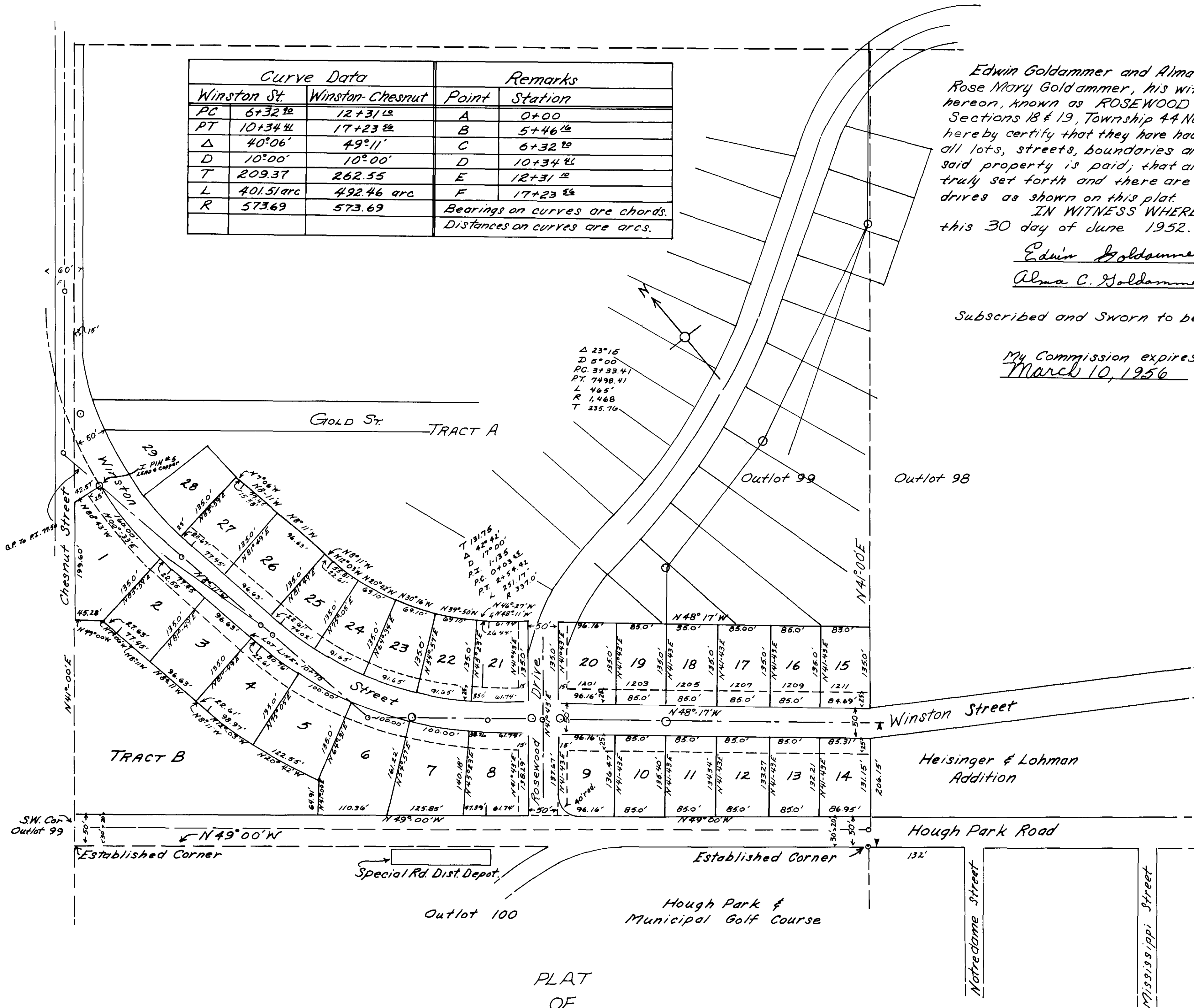
IN WITNESS WHEREOF, we hereunto set our hands and seals this 30 day of June 1952.

Edwin Goldammer Tommy Goldammer
Alma C. Goldammer Rose Mary Goldammer

Subscribed and Sworn to before me this 30 day of JUNE 1952.

My Commission expires
March 10, 1956

Henry J. LePage
Notary Public



PLAT
OF
ROSEWOOD ADDITION
CITY OF JEFFERSON
COLE COUNTY, MISSOURI

SCALE 1"=100'

I, Henry W. Ellis, City Clerk of the City of Jefferson, Cole County, Missouri, hereby certify the above plat was approved by the Mayor of the City of Jefferson, Cole County, Missouri, by Ordinance No. 5552, approved the 4th day of June 1952.

IN WITNESS WHEREOF, I have hereunto set my hand and affixed the seal of the City of Jefferson, Missouri, this 30th day of June 1952.

Henry W. Ellis
City Clerk

Traced from print 7-13-72 A.S. SIGNATURES traced from original.

83

COMPLETED
SUB. 83.00