

PLAT SHOWING
SCHEPERLE & HUTTON SUBDIVISION
Scale 1"=50'

Stone-North Quarter Corner
Section 21, T44 N-R11 W

OWNERS CERTIFICATE

RAYMOND SCHEPERLE AND MILD HUTTON BEING THE OWNERS OF A TRACT OF LAND SHOWN ON THIS PLAT CALLED SCHEPERLE AND HUTTON SUB-DIVISION AND LOCATED IN THE SE 1/4 OF THE NW 1/4 OF SECTION 21, TOWNSHIP 44, RANGE 11, MORE PARTICULARLY DESCRIBED AS FOLLOWS:

BEGINNING AT A POINT ON THE EAST LINE OF SAID QUARTER SECTION, WHICH SAID POINT IS 1419 FEET SOUTH OF THE QUARTER SECTION CORNER, THENCE SOUTH 55 DEGREES WEST 1124 FEET, THENCE SOUTH 68 DEGREES 30 MINUTES EAST 72 FEET, THENCE NORTH 55 DEGREES EAST 239 FEET, THENCE SOUTH 65 DEGREES EAST 90.7 FEET, THENCE SOUTH 34 DEGREES WEST 19.3 FEET, THENCE SOUTH 79 DEGREES E. 85 FEET, THENCE NORTH 55 DEGREES EAST 674.35 FEET, THENCE NORTH 5°20' WEST 241.1 FEET, TO POINT OF BEGINNING, CONTAINING IN ALL 3.35 ACRES MORE OR LESS AS SHOWN ON THIS PLAT, HEREBY CERTIFY THAT A SURVEY HAS BEEN MADE OF SAID SCHEPERLE AND HUTTON SUB-DIVISION AND THE LOTS AND STREETS ARE LAID OUT AS SHOWN ON THIS PLAT AND THAT ON SAID PLAT THE LOT NUMBERS OF SAID LOTS AND THE SIZE THEREOF ARE TRULY AND FULLY SET FORTH, THAT ALL TAXES ARE PAID AND DO HEREBY DEDICATE TO THE CITY OF JEFFERSON FOR PUBLIC USE FOREVER ALL STREETS, AVENUES AND ALLEYS AS SHOWN ON THIS PLAT.

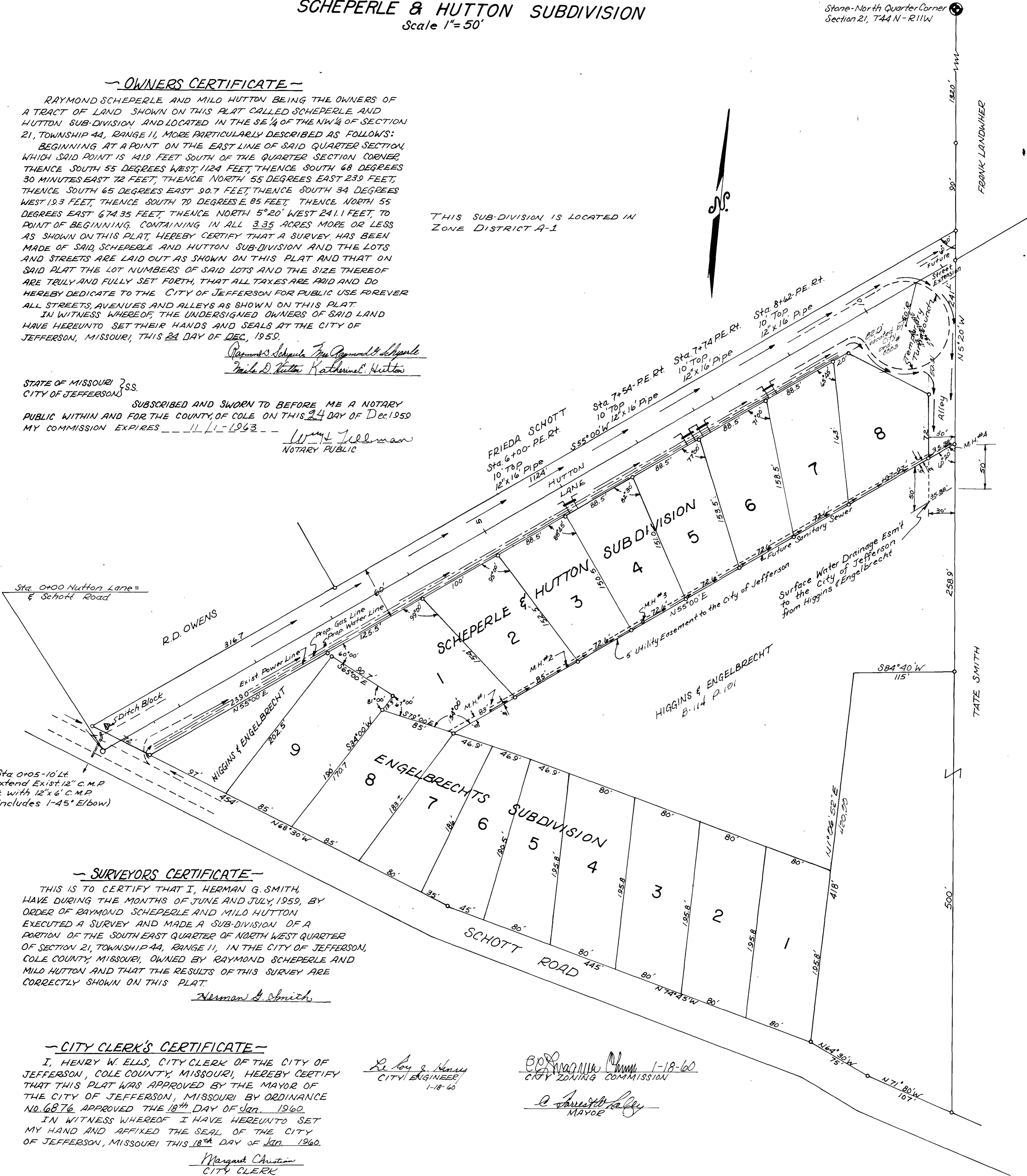
Raymond Scheperle
Mild Hutton
Katherine L. Hutton

STATE OF MISSOURI 2SS.
CITY OF JEFFERSON

SUBSCRIBED AND SWORN TO BEFORE ME A NOTARY PUBLIC WITHIN AND FOR THE COUNTY OF COLE ON THIS 24 DAY OF Dec. 1959 MY COMMISSION EXPIRES 11/1-1963

Wm. J. Williams
NOTARY PUBLIC

THIS SUB-DIVISION IS LOCATED IN
ZONE DISTRICT A-1



SURVEYORS CERTIFICATE

THIS IS TO CERTIFY THAT I, HERMAN G. SMITH, HAVE DURING THE MONTHS OF JUNE AND JULY, 1959, BY ORDER OF RAYMOND SCHEPERLE AND MILD HUTTON EXECUTED A SURVEY AND MADE A SUB-DIVISION OF A PORTION OF THE SOUTH EAST QUARTER OF NORTH WEST QUARTER OF SECTION 21, TOWNSHIP 44, RANGE 11, IN THE CITY OF JEFFERSON, COLE COUNTY, MISSOURI, OWNED BY RAYMOND SCHEPERLE AND MILD HUTTON AND THAT THE RESULTS OF THIS SURVEY ARE CORRECTLY SHOWN ON THIS PLAT.

Herman G. Smith

CITY CLERK'S CERTIFICATE

I, HENRY W. ELLS, CITY CLERK OF THE CITY OF JEFFERSON, COLE COUNTY, MISSOURI, HEREBY CERTIFY THAT THIS PLAT WAS APPROVED BY THE MAYOR OF THE CITY OF JEFFERSON, MISSOURI BY ORDINANCE NO. 6876 APPROVED THE 18th DAY OF Jan. 1960.

IN WITNESS WHEREOF I HAVE HEREUNTO SET MY HAND AND AFFIXED THE SEAL OF THE CITY OF JEFFERSON, MISSOURI THIS 18th DAY OF Jan. 1960.

Margaret Christian
CITY CLERK

Le Roy G. Henry
CITY ENGINEER
1-18-60

Edna M. Munn 1-18-60
CITY ZONING COMMISSION

B. J. H. H. H.
MAYOR