

CURVE DATA

	TANNER BRIDGE ROAD	MESA AVENUE
PC	3+51.55	1+64.50
PT	9+47.43	2+44.16
Δ	16° 30'	12° 54'
T	300.0'	40.0'
D	2° 46'	16° 12'
L	595.88'	79.66'
R	2069.11'	353.83'

	MESA AVENUE
PC	1+64.50
PT	2+44.16
Δ	22° 07'
T	200.0'
D	5° 36'
L	395.07'
R	1023.33'

Charles M. Lancaster and Elva G. Lancaster, his wife, M.C. Davis and O.V. Davis, his wife, George W. Lord and Janet R. Lord, his wife, being the owners of the subdivision, planted hereon, known as Southwood Hills Addition, being a part of the Southeast and Northeast quarters of Section 13, Township 44 North, Range 12 West, and a part of the Southwest quarter of Section 18, Township 44 North, Range 12 West, Cole County, Missouri, do hereby certify that they have had a survey made of and have properly marked all lots, streets, boundaries, and corners and courses, and that all tax against said property is paid, that all the lots and the size thereof are fully and truly set forth and there are hereby dedicated to public use all streets, alleys and drives as shown on this plat.

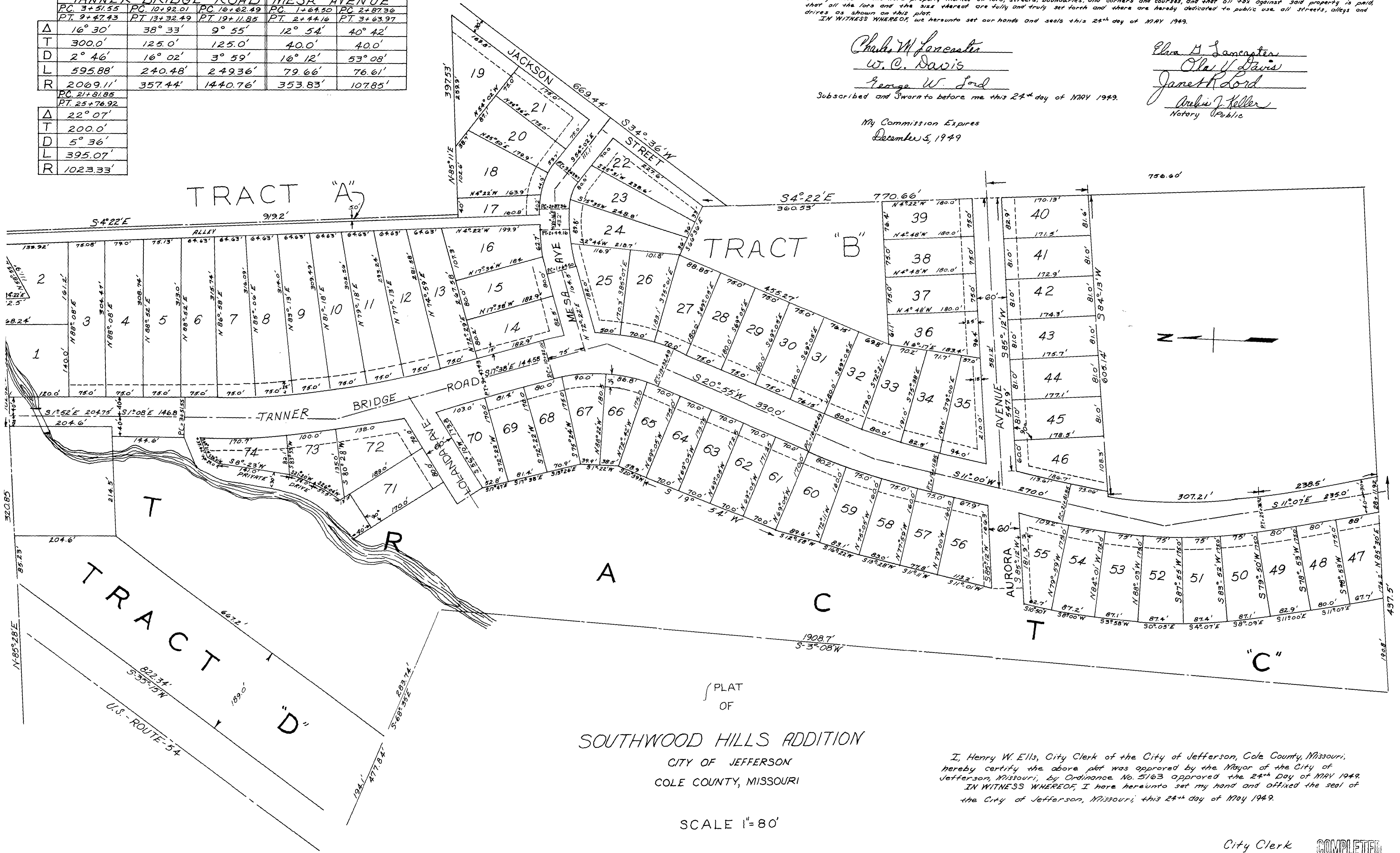
IN WITNESS WHEREOF, we hereunto set our hands and seals this 24th day of MAY 1949.

Charles M. Lancaster
W. C. Davis
George W. Lord

Elva G. Lancaster
O. V. Davis
Janet R. Lord
Archie J. Keller
 Notary Public

Subscribed and Sworn to before me this 24th day of MAY 1949.

My Commission Expires
December 5, 1949



PLAT
 OF
SOUTHWOOD HILLS ADDITION
 CITY OF JEFFERSON
 COLE COUNTY, MISSOURI

SCALE 1"=80'

I, Henry W. Ellis, City Clerk of the City of Jefferson, Cole County, Missouri, hereby certify the above plat was approved by the Mayor of the City of Jefferson, Missouri, by Ordinance No. 5163 approved the 24th Day of MAY 1949. IN WITNESS WHEREOF, I here hereunto set my hand and affixed the seal of the City of Jefferson, Missouri, this 24th day of MAY 1949.

City Clerk

COMPLETED

76