

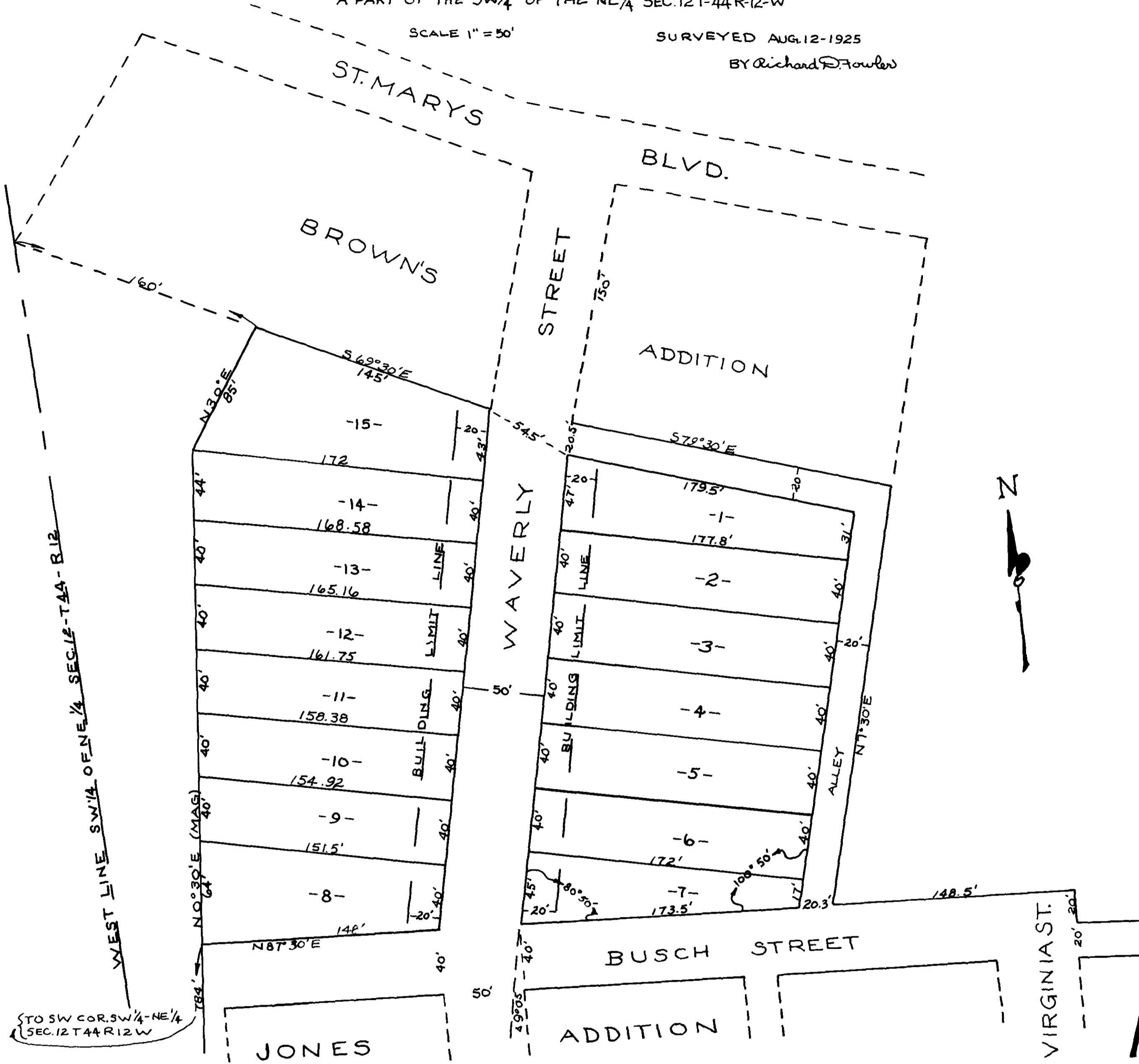
SUNNY-SIDE - PLACE

A PART OF THE SW¹/₄ OF THE NE¹/₄ SEC. 12 T-44 R-12 W

SCALE 1" = 50'

SURVEYED AUG. 12-1925

BY Richard F. Fowler



WEST LINE SW¹/₄ OF NE¹/₄ SEC. 12 T-44 R-12

TO SW COR. SW¹/₄-NE¹/₄ SEC. 12 T-44 R-12 W

13

SUB. 13.00

REGISTERED