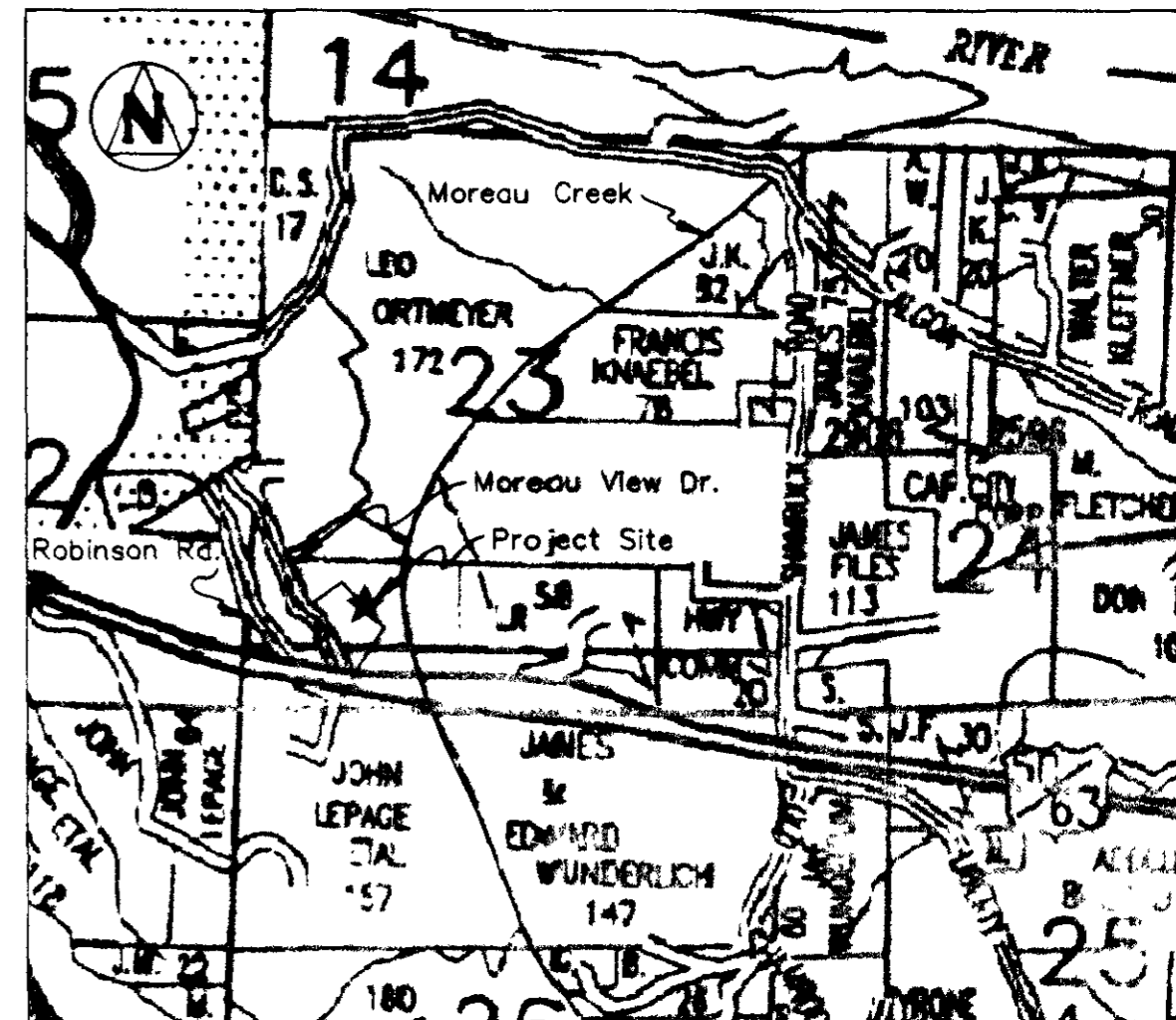
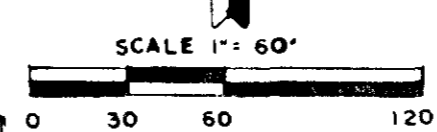
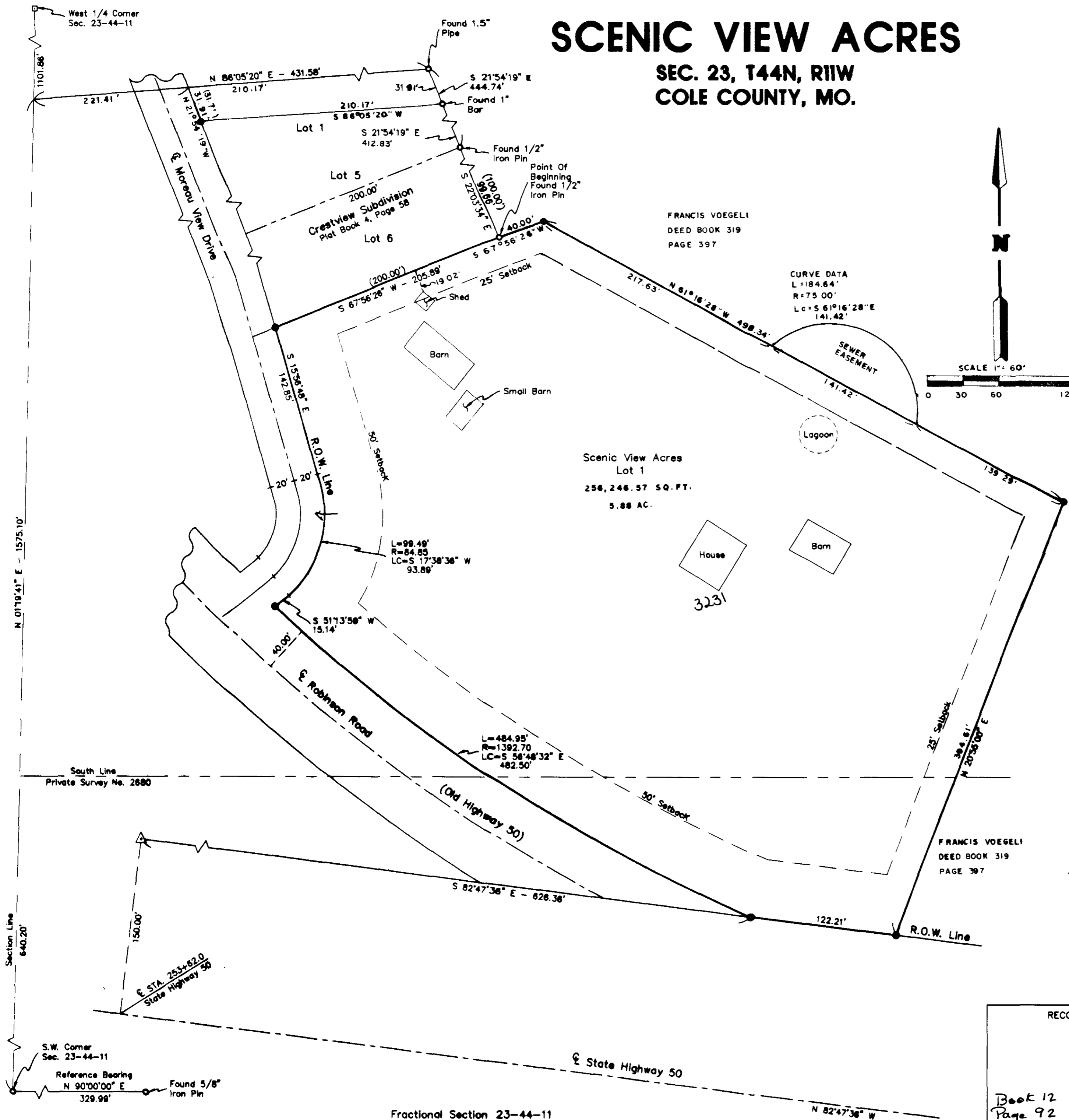


# SCENIC VIEW ACRES

SEC. 23, T44N, R11W  
COLE COUNTY, MO.



### Legend

- Found Iron Pin ○
- Set Iron Pin ●
- Found R.O.W. Marker ▲

### Utility Providers

- Electric - Ameren UE
- Telephone - Sprint
- Gas Service - Ameren UE
- Cable TV - None
- Water - Private Well
- Sewer - Private Sewer

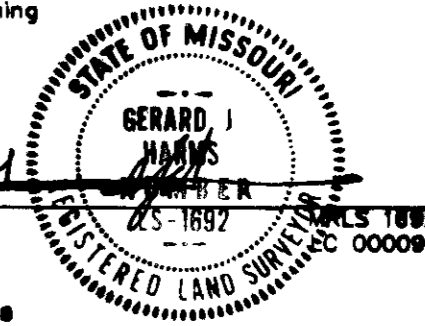
### Notes

Reference Bearing from Plat of Record.  
Bearings and distances in parenthesis are from deed and plat from record.  
This tract was part of Crestview Subdivision was vacated in Book 169, Page 645.

We, the undersigned, of the Cole County Planning Commission, do hereby certify that this plat was approved by the Cole County Planning Commission, this 10<sup>th</sup> day of November, 1998.

*W.R. England III*  
W.R. England III, Chairman

*Chris Yarnell*  
Chris Yarnell, P.E., Director of Planning



Gerard J. Harms, Sr.  
October 2, 1998  
Revised October 8, 1998  
Revised November 2, 1998  
Revised December 4, 1998

RECORDER OF DEEDS

TITLE:  
SCENIC VIEW ACRES

Book 12  
Page 92

BY:  
Francis W. & Mariela J. Voegeli

Missouri Registered  
ASBESTOS  
ENGINEERING  
LAND SURVEYORS  
**HARMS, INC.**  
Copyright Harms, Inc. 1998  
p.o. Box 88 Olden, MO 65058  
(573) 928-8828

DATE 10-02-98	FB NO. S-284
SHEET 1 OF 2	JOB NO. 98-3978-S

DRAWING NAME: 3978-SUB.DWG