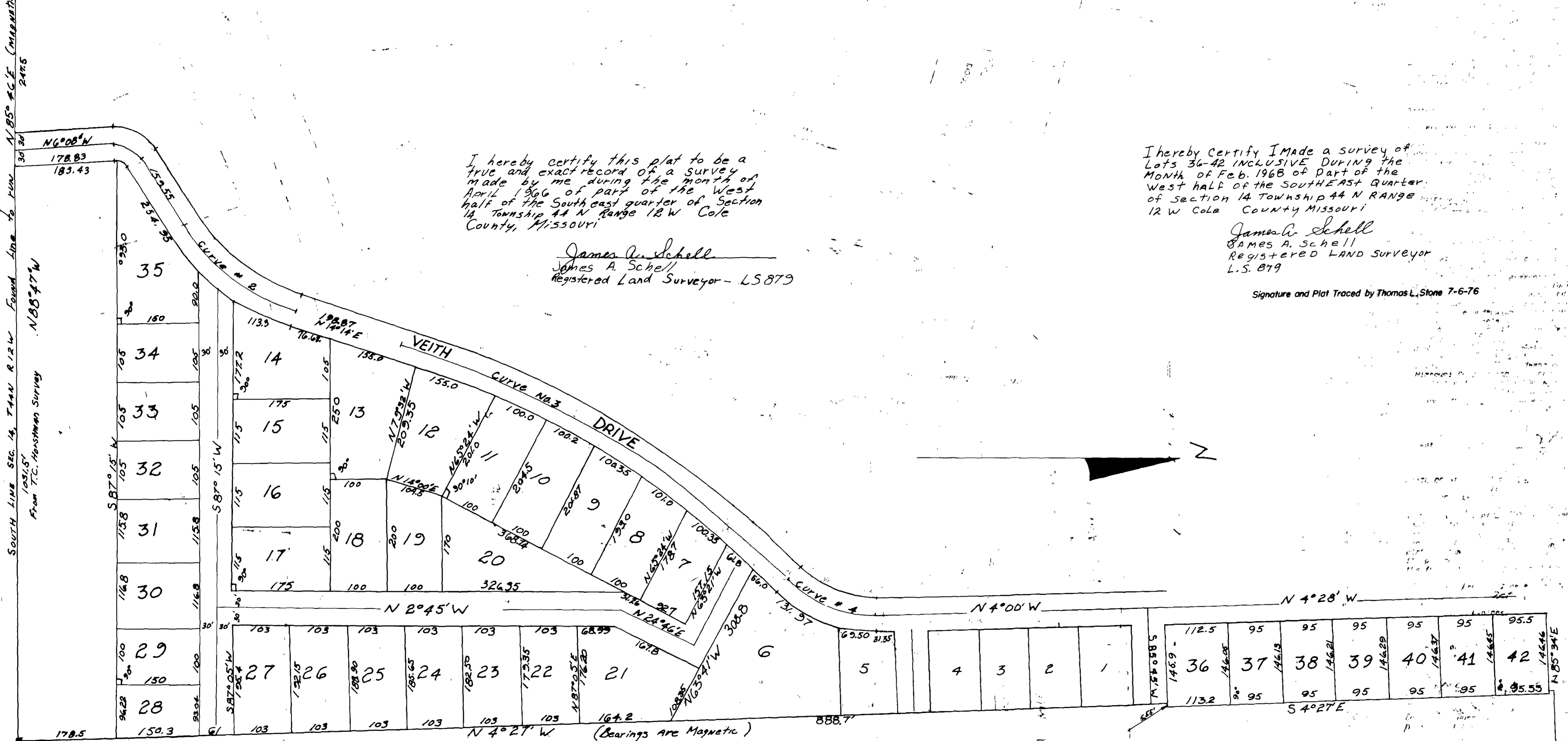


STONE (From T.C. Hestman Survey)  
S 1/4 Cor. Sec. 14, T44N R12W



I hereby certify this plat to be a true and exact record of a survey made by me during the month of April 1966 of part of the West half of the South east quarter of Section 14, Township 44 N Range 12 W Cole County, Missouri

James A. Schell  
James A. Schell  
Registered Land Surveyor - L.S. 879

I hereby certify I made a survey of Lots 36-42 INCLUSIVE DURING the Month of Feb. 1968 of Part of the West half of the Southeast Quarter of Section 14 Township 44 N Range 12 W Cole County Missouri

James A. Schell  
James A. Schell  
Registered Land Surveyor  
L.S. 879

Signature and Plat Traced by Thomas L. Stone 7-6-76

Curve No. 1	Curve No. 2	Curve No. 3	Curve No. 4
I = 60° 30' Rt.	I = 40° 14' Lt.	I = 28° 35' Rt.	I = 46° 43' Lt.
T = 28.13'	T = 129.60'	T = 420.0'	T = 93.32'
R = 48.24'	R = 353.83'	R = 1656.74'	R = 217.24'
D = 117° 48'	D = 16° 14'	D = 3° 28'	D = 26° 36'
L = 50.93'	L = 247.87'	L = 819.88'	L = 175.64'